



Labelling with the **direct** advantage

From the creators of the very first *Windows*® label design software comes *LabelDirect* - a PC labelling program written for specific printer ranges which offers unrivalled performance and control of your printers' features.

By driving your printer in its native command language, LabelDirect avoids the complexities of printer drivers whilst offering full control of your printer's features and distinct performance advantages over other labelling programs. What's more, the program also includes accurate screen representations of each printer's fonts making LabelDirect completely and uniquely WYSIWYG.

LabelDirect offers all the features you would expect from a professional labelling package including database integration, copy fitting, variable graphics, serial numbers and industry standard linear and 2D barcode symbologies; plus many other unique features developed in response to Image's 25+ years of experience in the labelling industry.

- Fastest possible print speed
- 100% WYSIWYG design including accurate font representation
- Full software control of printer features and settings
- Comprehensive range of variable data types
- Intuitive design tools - design labels in minutes
- Support for all major thermal printer ranges
- Use on any port or across a network

Fastest possible*
Printing

Supports the major labelling printers

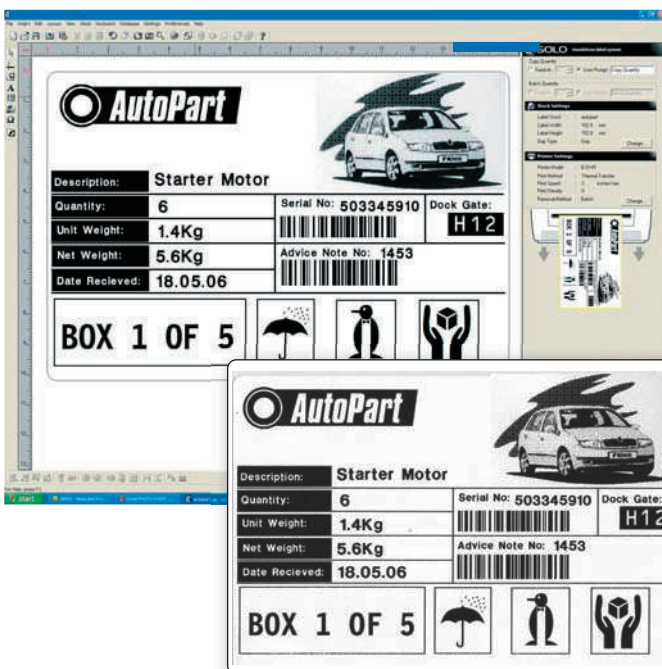


DATA DATAMAX TSC TOSHIBA IMAGE

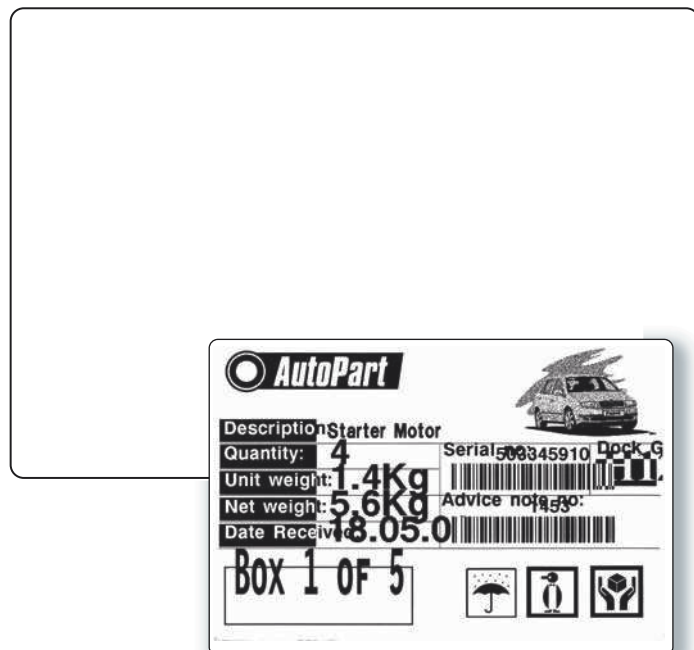
What you see is what you get

Using printer fonts the following shows how LabelDirect is truly WYSIWYG compared with the competition.

LabelDirect

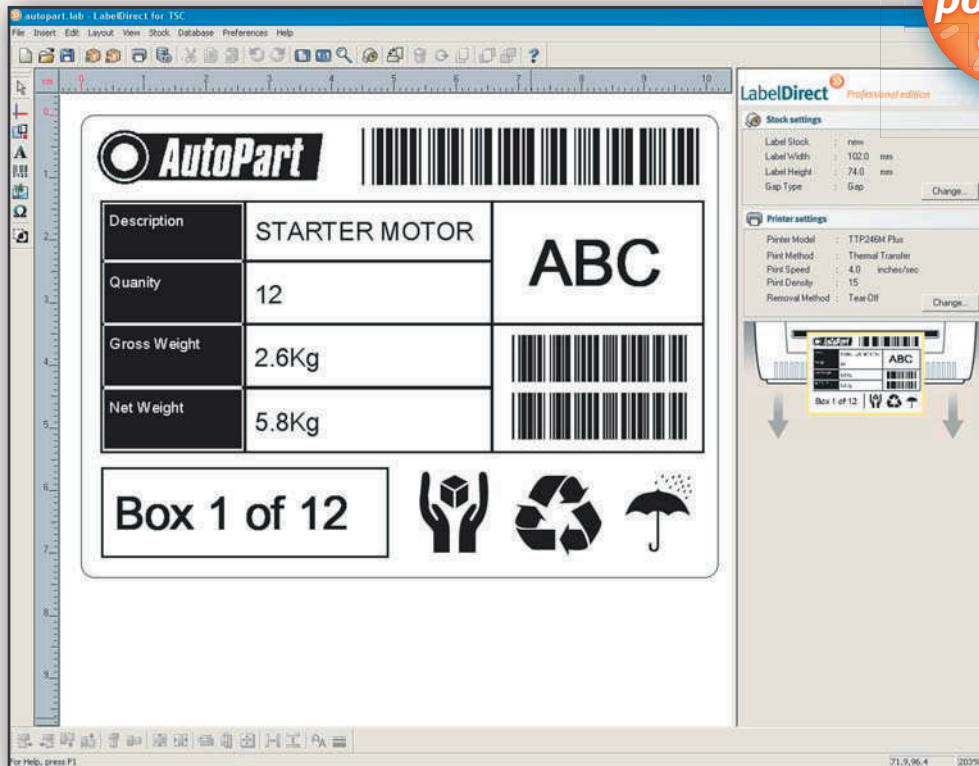


Competitor software



» Labelling in less clicks of the mouse

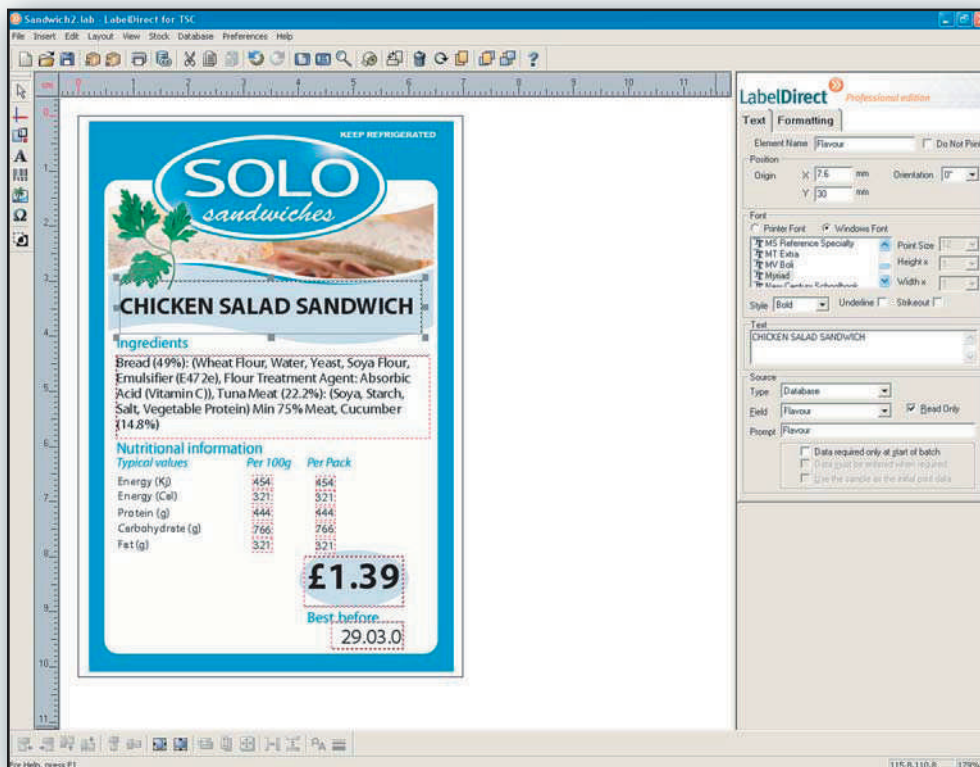
Fastest possible* design



Printer and stock settings displayed on the right hand side of the screen for easy editing. There is no need to go to the printer driver. All settings are made here and are saved with the label template.

On screen print preview of label appearance and orientation.

» Properties Window



Element properties displayed with one click

Comprehensive range of variable data sources.

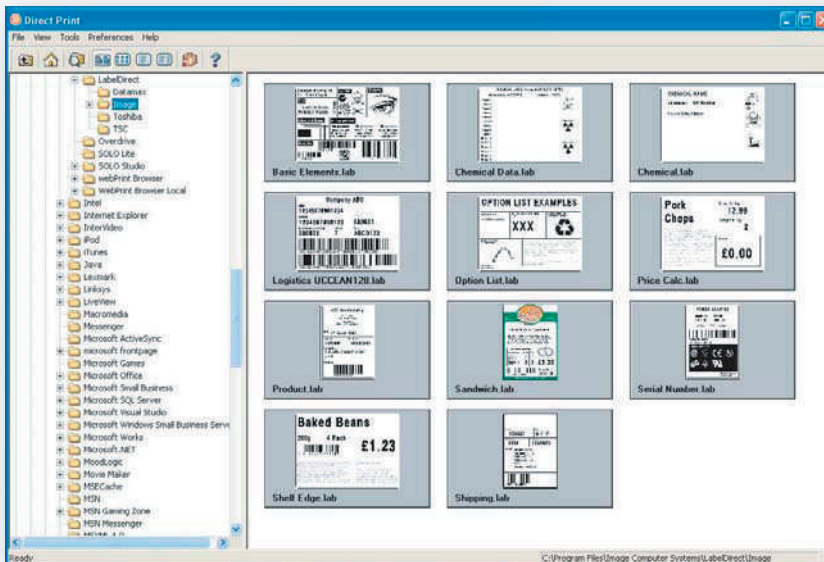
Formatting Tab for more advanced features

Printer fonts for speedier printing and truetype fonts available from the drop down menus

Preprinted stationery background can be displayed to allow accurate layout

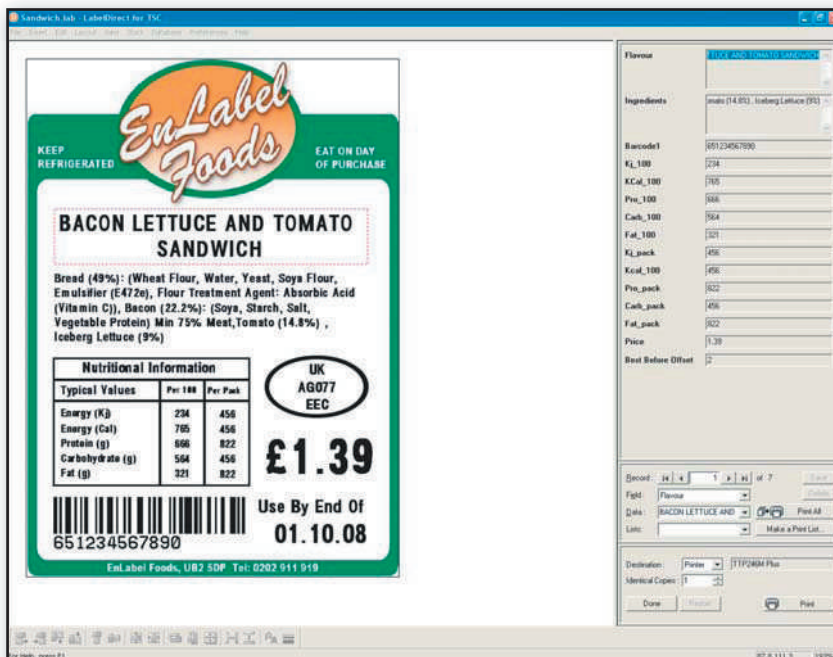
Print Only version for production

Fastest possible* production



Print only version for use where design is only authorised by certain personnel

Data Entry screen for Preview & Print

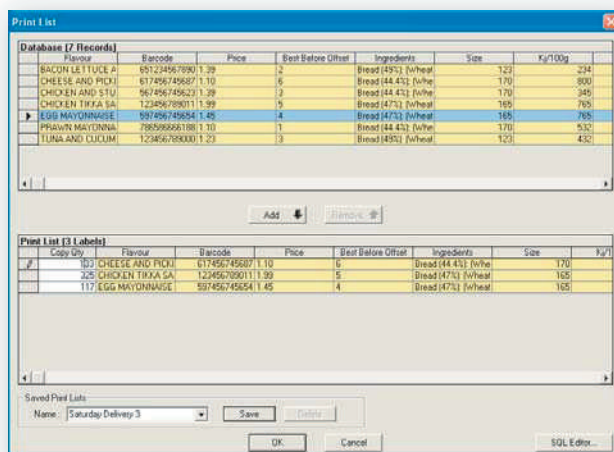


Keyboard input with possibility of Datastore feature to save data for later use.

Connection to any database with powerful search, filter and SQL queries.

Preview shows with actual data before printing.

Powerful Print Job Control



Print List feature available which allows creation of print jobs where a record can be chosen and given individual copy quantities and jobs can be saved for future use. Any number of print lists can be created



Features

General

Works with Zebra, Toshiba, Datamax, Sato & TSC printers
Licencing per PC/Printer

Label Design

100% WYSIWYG
Direct display of selected element properties
Wide range of variable data types available
Drag & Drop and sizing with mouse
Grid and Guide line control for accurate layout
Full control with mouse, arrows or value entry
Layering with move elements to front/back
Settings for inverse, negative or backwards print
Group alignment & properties tools
Undo/Redo multiple levels
Customised print time prompts
Export/import of templates and associated files
Automatic addition of prefix/suffix
Metric or Imperial ruler & measurement settings
Ribbon & label colour options
Settings for max/min length, truncation and padding
Settings for constraints and coercion
Preferences setting - font, barcode, sizes etc
Optional display of pre-printed label background

Label Settings

Large selection of standard label sizes
Straightforward creation of new types & sizes
Settings for peel-off, tear-off & cutter
Settings for continuous, gap or black line
Settings for multiple labels across web

Text

Select printer fonts & TrueType fonts
Automatic copy-fit and left, centre, right justification
Rich text with rules based control with Macro Scripting
Currency, Weight and numeric data types.
Control of no of decimal places for pricing, sizing units
Automatic formatting of currency £,p,\$,¢,€ for pricing
Automatic formatting of units kg,g,m,cm,lb,oz for sizing
Constraint control for data input, Uppercase etc

Barcodes

All common symbologies including 2D
Uses printer generated barcodes for accuracy
GS1 UCC/EAN Wizard for application identifier generation
Automatic check digit calculation
Macro Scripting for non standard check digits etc
Human readable text options

Graphics

Lines, Boxes and pictures of all graphic formats
Integrity of graphic maintained even when resized
Various algorithm choices for rendering to monochrome
Library of industry appropriate, scalable trueType symbols
Graphics or Symbol can be chosen from database field

Incrementing, Decrementing & Serialisation

Wide range of ranges and custom ranges
Options for limit reached etc
Start value from fixed, keyboard, other element or database
Next serial number memorised for next run

Date & Time

Wide range of formats available
Custom formats
Date/Time offsets from keyboard or database or calculated

Option Lists

Choose predefined options at print time.
Options chosen can cause print of an associated

Print Time Processing

Basic like, Macro Script language to control label variables
Real time calculations for currency, weight etc
Linking and concatenation of label variables

Database

Wizard for easy connection
Multiple database types and OLEDB & ODBC for all others
Connection to spreadsheets or text files (csv etc)
SQL queries and sophisticated filter control
Create predefined filters or sql queries for print time
Selection of individual record or groups at print time
Copy quantity control from database fields
Print Lists creation from selected records with quantities
Datastore facility creates database from input label data

Datastore

Create your own database appropriate to your label
Design label for keyboard input & allow database to be created from data entered at print time
Data in mdb format can be read and edited by spreadsheet or other database software

Printing

Full preview of data on the label before print
Data entry from keyboard and or database
Create & save print jobs using Print List setup
Print to file facility, raw printer commands
Direct, command language print for high speed
Print speed optimisation, saves fixed data in printer

Print Only Version

Click thumbnail view of labels for selection for print
Can add records to the Datastore, if allowed to

Job Control

Print list can be created and saved for repeat print jobs

Management & Audit control

Password and user control of Design and or Print Only
Audit history of labels printed against time and user.

Networking

No limitations or licence restrictions on use across a network
Printer can be local or network remote
Label templates & database can be remote

Download a fully functional 30 Day Trial of LabelDirect from our downloads page on:
www.image-cs.co.uk/downloads