



PRODUCT CATALOGUE

CITIZEN
Micro HumanTech

DATALOGIC

EPSON
EXCEED YOUR VISION

Honeywell

MOTOROLA

TOSHIBA

RESELLER

www.supplylineid.com

Email: info@supplylineid.com

TEL: 01403 865 111

FAX: 01403 865 222



WELCOME

www.supplylineid.com | www.bcscoding.co.uk

Welcome to the latest edition of the Supplyline ID Catalogue. The new brochure offers a huge range of products covering all aspects of Packaging / Printing / Warehouse Management / POS / Labelling / Barcoding and Software.

As ever Supplyline have increased its range of products at the request of its customers to help us better serve their overall needs and offer a one-stop shop for all their Supplies and Equipment.

What's NEW?

PACKAGING:

Did you know we now sell PALLET WRAP / JUICE BOTTLES / FOOD GRADE BAGS and STRAPPING Equipment.

PRINTERS:

We have extended our range hugely to now include POS Printers / WIRELESS Printers / PLASTIC CARD I.D. Printers and WRISTBAND Printers for healthcare.

SCANNERS & TERMINALS:

We have introduced new products and brand names to our product list, these include BLUETOOTH / WiFi / VOICE / HANDS-FREE and 3G Terminals.

WEBSITES:

To make it easier for our customers we have 3 new dedicated websites that offer more in depth information on specific products and Equipment.

WWW.BARCODEPRINTERSOLUTIONS.CO.UK

A Website dedicated to Printers and all things associated with printing

WWW.BARCODESCANNERSOLUTIONS.CO.UK

A Website dedicated to Scanners and Terminals including Barcode Verifiers.

WWW.BARCODELABELSOLUTIONS.CO.UK

A Website solely for Labels, Tags and Ribbons with a huge range of applications and stories to follow.

TERMS & CONDITIONS:

All Vendor, manufacturer, and technology logos, trademarks and brand names are copyrighted to their respective owners. Prices and details correct at time of printing. All prices are ex-VAT. Terms & Conditions apply.



CONTENTS



Barcode Scanners & Readers

- POS Scanners
- Industrial Scanners
- Bluetooth / WiFi / Cordless
- Datalogic / Honeywell / Motorola

04

Barcode & Label Printers

- Barcode Printers
- TAG Printers
- Wireless Printers
- Zebra / Toshiba / Datamax

24

POS Printers & Touch Screens

- POS Printers
- EPSON Printers
- CITIZEN Printers
- ELO Touch / APG Cash Draws

38

Wireless & Mobile Printers

- Wireless Printers
- Portable Printers
- ZEBRA Printers
- Datamax / Intermec

44

Plastic Card & I.D. Printers

- I.D. Printers
- Cards & Supplies
- Wristband Printers
- ZEBRA Printers

50

Healthcare Wristbands & Scanners

- Patient Wristbands
- Disinfectant Ready Scanners
- ZEBRA Wristbands and Supplies
- Datalogic / Honeywell / Zebra

54

Terminals & Wireless Scanning

- Warehouse Solutions
- Goods in & Out
- Bluetooth / WiFi / Cordless
- Datalogic / Honeywell / Motorola

56

Self-Adhesive Labels and Tags

- Labels Paper / PE / Polyester
- Direct Thermal / Thermal Transfer
- Colour Labels
- Laser Labels

72

Printer Ribbons & Coding Foils

- Genuine Ribbons
- ITW Ribbons
- ARMOR Ribbons
- Colour Ribbons

78

Print-Heads / Spares / Servicing

- Genuine Print-heads
- Compatible Print-heads
- On-Site Service & Maintenance
- ZEBRA / TOSHIBA / DATAMAX

84

Barcode & Label Software

- Barcode Software
- BAR-TENDER Software
- Windows Drivers

88

Label Rewinders / Dispensers

- Label Rewind Units
- Label Applicator Guns
- Label Bottle Machines
- Label Counters

90

Packaging / Pallet-Wrap / Bottles

- Pallet Wrap
- Juice Bottles
- Pricing Guns & Labels
- Strapping Equipment

94



SUPPLYLINE - Re-Defining Barcode Scanning

www.barcodescannersolutions.co.uk



RETAIL & HOSPITALITY



- POS SCANNERS
- SHOPS / RETAIL
- RESTAURANTS
- HOTELS



MANUFACTURING



- AUTOMATION
- ELECTRONICS
- FOOD & BEVERAGE
- INDUSTRIAL





DATALOGIC **Honeywell** **Intermec** **MOTOROLA** **OPTICON**

www.barcodescannersolutions.co.uk



TRANSPORT & LOGISTICS



- WAREHOUSE
- GOODS IN
- TRACKING & TRACING
- COURIER



HEALTHCARE & PHARMACEUTICAL



- HOSPITALS
- PATIENT SAFETY
- PHARMACY
- CLEAN ROOM





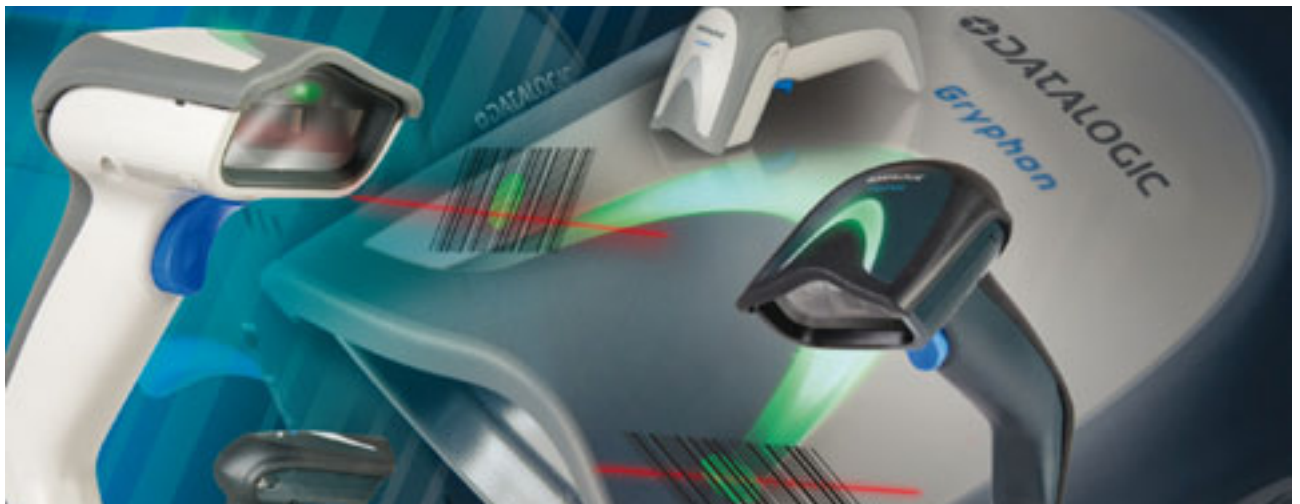
About Datalogic

Datalogic Group is a global leader in Automatic Data Capture and Industrial Automation. As a world-class total solutions provider and producer of bar code readers, data collection mobile computers, RFID and vision systems, Datalogic of-

fers innovative solutions for a full range of applications in the manufacturing, retail and transportation & logistics industries.

Datalogic was founded in 1972 by Romano Volta. It had its origin in the optical sensor business,

servicing the Automation Industry, but towards the end of the 70's it moved into the field of bar code technology and very soon became the European leader in industrial applications.



GRYPHON GD4100



TYPE	Linear Imager
CONNECTION	USB, Serial, Wedge
SYMBOLOGIES	1D BARCODES
RESOLUTION	5mil
WARRANTY	5 Year Return to base

Gryphon GD4100 readers' ability to capture bar codes from near contact to over 10 m / 3.9 ft increases productivity and improves ergonomics for users. A wide scan angle reads very wide codes and renewed decoding capabilities increase throughput on hard-to-read, poor or damaged codes. All of these features combined with low-resolution decoding for labels as small as 3 mils, establishes the Gryphon GD4100 readers as high-performance products and powerful data capture solutions. Datalogic's exclusive patented 'Green Spot' for good-read feedback directly on the code is ideal under dim lighting conditions or noisy environments.

5 year manufacturers warranty

GRYPHON GM4400 2D CORDLESS



TYPE	Area Imager
CONNECTION	USB, Serial, Wedge
SYMBOLOGIES	1D & 2D BARCODES
CORDLESS RANGE	30M
WARRANTY	3 Year Return to base

GM4400 2D scanner blends the most advanced reading technology and the best suitable radio technology with a unique set of features to allow operators maximum efficiency and ease of use. Featuring narrow band radio communications with Datalogic's STAR Cordless System™.

NEW!

MOBILE

3 year manufacturers warranty



GRYPHON GBT4400 2D CORDLESS



TYPE	Area Imager
CONNECTION	USB, Serial, Wedge
SYMBOLOGIES	1D & 2D BARCODES
CORDLESS RANGE	30M
WARRANTY	3 Year Return to base

Gryphon GBT4400 2D scanner blends advanced reading technology with the ability to detect the natural actions of the operator to produce user-friendly features and outstanding performance. Lightweight and comfortable to use, the steady, dim, deep red illumination light is much easier on the eyes than other similar products with flicker illumination, even during extended periods of use

NEW!

MOBILE

3 year manufacturers warranty

GRYPHON GD4400 2D



TYPE	Area Imager
CONNECTION	USB, Serial, Wedge
SYMBOLOGIES	1D & 2D BARCODES
RESOLUTION	4mil
WARRANTY	5 Year Return to base

Gryphon™ GD4400 imager blends advanced 2D reading with motion sensing technology, producing a user-friendly device with outstanding performance. Perfect for both handheld and presentation reading, the Gryphon GD4400 imager features Datalogic's Motionix™ motion-sensing technology.

NEW!

5 year manufacturers warranty

GRYPHON GD4300



TYPE	Laser
CONNECTION	USB, Serial, Wedge
SYMBOLOGIES	1D BARCODES
RESOLUTION	4mil
WARRANTY	5 Year Return to base

Gryphon GD4300 scanner is an ideal solution providing longer reading distances, snappy performance with a bright, well-defined scan line. Poor quality bar codes and low contrast labels with bad edge definition are not a problem for this Gryphon scanner, plus Datalogic's patented Green Spot provides visual good-read feedback directly on the code, allowing for fast and accurate scanning which is especially useful in noisy environments or in places where "beep-free" reading is desired.

5 year manufacturers warranty

QUICKSCAN QM2100 CORDLESS



TYPE	Linear Imager
CONNECTION	USB, Serial, Wedge
SYMBOLOGIES	1D & 2D BARCODES
CORDLESS RANGE	12M
WARRANTY	3 Year Return to base

QuickScan Mobile QM2100 handheld reader is the perfect entry level cordless solution for general purpose data collection applications. For small to mid-size business owners, the freedom of dependable wireless devices has been priced out of reach due to features and functionality that are just not necessary for basic data collection tasks.

MOBILE

3 year manufacturers warranty

Barcode Scanners & Readers



QUICKSCAN QD2100



TYPE	Linear Imager
CONNECTION	USB, Serial, Wedge
SYMBOLOGIES	1D BARCODES
RESOLUTION	5mil
WARRANTY	3 Year Return to base

QuickScan I QD2100 linear imaging reader is an entry level product that is perfect for use in retail and office environments plus activities associated with couriers and postal services. The QD2100 is small, lightweight and its ergonomic design is comfortable to use during daily operations. It offers snappy reading performance especially on hard to read bar codes and is capable of reading a wide range of symbologies.

3 year manufacturers warranty

QUICKSCAN QD2300 L



TYPE	Linear Imager
CONNECTION	USB, Serial, Wedge
SYMBOLOGIES	1D BARCODES
RESOLUTION	5mil
WARRANTY	3 Year Return to base

QuickScan L scanner provides a simple solution for those who prefer laser scanning technology and need to read bar codes at nominal distances. A wider than usual scan angle provides the ability to read a longer bar code from a shorter distance. Perfect for use in retail and office environments, its small, lightweight and ergonomic design is comfortable to use during daily operations. The QuickScan L reader has snappy reading performance and is capable of reading a wide range of symbologies.

3 year manufacturers warranty

HERON



TYPE	Linear Imager
CONNECTION	USB, Serial, Wedge
SYMBOLOGIES	1D BARCODES
RESOLUTION	4mil
WARRANTY	5 Year Return to base

Heron entry-level readers are packed with features to delight any user. Ideal for instinctive reading distance applications (near contact to over 20 cm / 8 in) at the retail point of sale (POS) or office applications, the Heron readers provide high performance in an innovative design package. Perfect for use as both a handheld and a presentation style reader Datalogic's exclusive patented 'Green Spot' for good-read feedback directly on the code is ideal under dim lighting conditions or noisy environments.

5 year manufacturers warranty

TOUCH Pro & Light



TYPE	CCD
CONNECTION	USB, Serial, Wedge
SYMBOLOGIES	1D BARCODES
RESOLUTION	5mil
WARRANTY	5 Year Return to base

Touch 65/90 linear imaging contact readers are an excellent value for those seeking a cost-effective solution for general purpose document handling and retail applications. Touch 65/90™ Pro provides a complete all in one multi-interface solution, including RS-232, USB, Wedge and Wand Emulation while Touch 65/90 Light provides USB or PS2 Wedge and RS-232 single models.

BEST SELLER

5 year manufacturers warranty



MAGELLAN 800i



TYPE	Omni Directional
CONNECTION	USB, Serial, Wedge
SYMBOLOGIES	1D & 2D BARCODES
RESOLUTION	3mils
WARRANTY	3 Year Return to base

The Magellan™ 800i omnidirectional presentation scanner is a versatile data collection tool for many applications. It uses Datalogic ADC's latest digital imaging technology to provide intuitive and fast reading of 1D and 2D bar codes as well as supporting more advanced features like image capture and EAS tag deactivation. Despite its small size, the Magellan 800i reader provides big performance and reliability along with a rich feature set to provide excellent value in virtually any data collection system.

NEW!

3 year manufacturers warranty

MAGELLAN 3200Vsi



TYPE	Imager
CONNECTION	USB, Serial, Wedge
SYMBOLOGIES	1D & 2D BARCODES
RESOLUTION	5mil
WARRANTY	3 Year Return to base

Magellan™ 3200VSi bar code reader brings Datalogic's new imaging technology to the high-volume point-of-sale. It is the first bar code scanner to duplicate the speed and wide field-of-view of high-performance omnidirectional laser scanners while adding the benefits associated with imaging. This imaging technology provides outstanding performance when capturing hard-to-read bar codes such as truncated (short), out-of-spec, poorly printed and GS1 DataBar™ codes.

3 year manufacturers warranty

GRYPHON GM4100 CORDLESS

NEW!



TYPE	Linear Imager
CONNECTION	USB, Serial, Wedge
SYMBOLOGIES	1D BARCODES
CORDLESS RANGE	30M
WARRANTY	3 Year Return to base

Gryphon GM4100 cordless linear imaging readers are the ultimate solution for applications in retail and light industrial environments where mobility is necessary for improved productivity. Mobile communications also eliminate the restraints caused by cabled devices, providing a safer and more efficient environment for employees. Narrow band radio communications with Datalogic's STAR Cordless System™ is the key to increased productivity and flexibility in the workplace.

MOBILE

3 year manufacturers warranty

GRYPHON GBT4100 CORDLESS



TYPE	Linear Imager
CONNECTION	USB, Serial, Wedge
SYMBOLOGIES	1D BARCODES
CORDLESS RANGE	30M
WARRANTY	3 Year Return to base

Gryphon GBT4100 readers eliminate the need for cables that limit operator movement and create safety concerns in the workplace. The reader can also transmit data to the host through its base station as well as to any commercial or embedded Bluetooth® v2.0 compliant device. Datalogic's unique 2-position cradle provides multiple features for the user.

MOBILE

3 year manufacturers warranty



POWERSCAN PD8300



IP65



TYPE	Laser
CONNECTION	USB, Serial, Wedge
SYMBOLOGIES	1D BARCODES
INDUSTRIAL RATING	IP65
WARRANTY	3 Year Return to base

PowerScan 8000 product series is Datalogic ADC's premium line of rugged industrial handheld data collection products. The PowerScan PD8300 laser scanner offers state-of-the-art performance in a corded industrial product. The PD8300 reader features Datalogic's exclusive 3 Green Lights (3GL™) for superior good read feedback

3 year manufacturers warranty

POWERSCAN PM8300

MOBILE



IP65



TYPE	Area Imager
CONNECTION	USB, Serial, Wedge
SYMBOLGIES	1D & 2D BARCODES
CORDLESS RANGE	50M
WARRANTY	3 Year Return to base

The PowerScan™ PM8300 cordless laser scanners are Datalogic ADC's premium line of rugged industrial handheld data collection products for linear codes. The PowerScan PM8300 series includes different models able to satisfy all customers' needs; the PM8300 is the basic cordless model; the PM8300-D intermediate model includes a display and 3-key keypad; and the ultimate PM8300-DK model features a display and a full 16-key keyboard. The mobile phone-like keyboard allows for the manual entering of bar codes that are not readable and enables easy management of simple code-quantity applications like inventory, picking, receiving, etc.

3 year manufacturers warranty

POWERSCAN PD7100



IP65



TYPE	Linear Imager
CONNECTION	USB, Serial, Wedge
SYMBOLOGIES	1D BARCODES
INDUSTRIAL RATING	IP65
WARRANTY	3 Year Return to base

PowerScan 7100/7000 product series are Datalogic ADC's value line of rugged industrial handheld data collection products. The PowerScan PD7100 linear imaging corded reader combines rugged durability and extremely snappy reading performance all at an affordable price. Datalogic ADC's innovative and unique optical design of the PowerScan 7100 series of readers combines scanner features that are normally available on different scanner models.

3 year manufacturers warranty

POWERSCAN PBT7100



IP65



TYPE	Linear Imager
CONNECTION	USB, Serial, Wedge
SYMBOLOGIES	1D BARCODES
CORDLESS RANGE	100M
WARRANTY	3 Year Return to base

PowerScan 7100 product series are Datalogic ADC's value line of rugged industrial handheld data collection products. The PowerScan PBT7100 linear imaging bar code reader with Bluetooth® wireless technology offers operator freedom from cable entanglement, rugged durability and extremely snappy reading performance all at an affordable price. Datalogic ADC's innovative and unique optical design of the PowerScan 7100 series of readers combines features that are normally available on different models.

MOBILE

3 year manufacturers warranty

Honeywell

HONEYWELL 1202G BLUETOOTH

Honeywell



TYPE	Laser
CONNECTION	USB, Serial, Wedge
SYMBOLGIES	1D BARCODES
CORDLESS RANGE	30M
WARRANTY	5 Year Return to base

3800gHD High Density Linear Imager Scanner Based on the proven 3800g platform, the 3800gHD is optimized for applications using high-density (HD) barcodes commonly found in electronics manufacturing, telecom, aerospace, and automotive. Compact, ergonomic design and class-leading durability, coupled with aggressive reading performance, makes the 3800gHD the ideal choice for customers who appreciate a reliable, versatile, and economical solution to meet their high-density scanning needs.

NEW!

5 year manufacturers warranty

HONEYWELL 3820 Cordless

Honeywell



TYPE	Linear Imager
CONNECTION	USB, Serial, Wedge
SYMBOLGIES	1D BARCODES
CORDLESS RANGE	10M
WARRANTY	3 Year Return to base

The 3820 Cordless Linear Image Scanner is Ideal for light industrial linear scanning applications where freedom of movement is essential, the 3820 combines the performance of Adaptus® Imaging with Bluetooth™ wireless connectivity.

MOBILE

3 year manufacturers warranty

HONEYWELL 4800i

Honeywell



IP54

TYPE	Imager
CONNECTION	USB, Serial, Wedge
SYMBOLGIES	1D & 2D BARCODES
INDUSTRIAL RATING	IP54
WARRANTY	5 Year Return to base

The 4800i Industrial 2D Imager is designed to provide unmatched data collection performance and versatility for applications that demand maximum reliability in the harshest working environments.

5 year manufacturers warranty

HONEYWELL 4820i

Honeywell



IP54

TYPE	Linear Imager
CONNECTION	USB, Serial, Wedge
SYMBOLGIES	1D BARCODES
CORDLESS RANGE	10M
WARRANTY	3 Year Return to base

The 4820i Industrial Cordless 2D Imager is designed to provide unmatched data collection performance and versatility for applications that demand maximum reliability in the harshest working environments. Readers combine features that are normally available on different models.

MOBILE

3 year manufacturers warranty

Honeywell

HONEYWELL XENON 1900

Honeywell



TYPE	Linear Imager
CONNECTION	USB, Serial, Wedge
SYMBOLGIES	1D & 2D BARCODES
FEATURES	Omni-Directional
WARRANTY	5 Year Return to base

The Xenon 1900, is Honeywell's sixth-generation of area-imaging technology redefining the standard for hand-held scanners. Featuring a custom sensor that is optimized for bar code scanning, the Xenon 1900 offer industry-leading performance and reliability for a wide variety of applications that require the versatility of area-imaging technology.

NEW!

5 year manufacturers warranty

HONEYWELL 3200

Honeywell



TYPE	Linear Imager
CONNECTION	USB, Serial, Wedge
SYMBOLGIES	1D & 2D BARCODES
SCANNER RANGE	Up to 30CM
WARRANTY	5 Year Return to base

ivers quality linear barcode scanning and user friendly ergonomics, combined in a solution that's affordable and dependable for a whole variety of applications. Whether you're automating a pen and paper process, or require a high-quality yet cost effective barcode scanner to replace your existing devices, the 3200 is an ideal solution.

5 year manufacturers warranty

HONEYWELL 4600g

Honeywell



TYPE	Linear Imager
CONNECTION	USB, Serial, Wedge
SYMBOLGIES	1D & 2D BARCODES
FEATURES	Omni-Directional
WARRANTY	5 Year Return to base

The 4600g combines the right blend of performance and durability for a wide variety of applications that benefit from the power and versatility of a 2D imaging solution.

5 year manufacturers warranty

HONEYWELL 4600r

Honeywell



TYPE	Linear Imager
CONNECTION	USB, Serial, Wedge
SYMBOLGIES	1D & 2D BARCODES
FEATURES	Omni-Directional
WARRANTY	5 Year Return to base

The 4600r provides high-performance presentation scanning of linear barcodes, making it ideal for fast-paced POS scanning applications. Its ability to read all 2D barcodes, plus capture digital images, enable new applications that increase productivity all with one device.

5 year manufacturers warranty

Honeywell

HONEYWELL FOCUS 1633BT

Honeywell



TYPE	Linear Imager
CONNECTION	USB, Serial, Wedge
SYMBOLGIES	1D & 2D BARCODES
CORDLESS RANGE	10M
WARRANTY	2 Year Return to base

The 1633 Focus BT wireless area-imaging scanner combines the freedom of blue-tooth wireless technology with features found in the popular 1690 Focus. Patented RangeGate technology allows the FocusBT to scan and store barcodes when out of range of a host system. Stored scans are automatically downloaded to the host when the connection is re-established.

MOBILE

2 year manufacturers warranty

HONEYWELL FOCUS 1690

Honeywell



TYPE	Linear Imager
CONNECTION	USB, Serial, Wedge
SYMBOLGIES	1D & 2D BARCODES
RESOLUTION	3.5mil
WARRANTY	5 Year Return to base

The Focus 1690 is a high performance, hand-held area-imaging scanner. The Focus provides users with increased throughput for virtually all 1D and 2D barcode reading applications, including poorly printed or damaged barcodes by incorporating high resolution imaging and true contact reading.

5 year manufacturers warranty

HONEYWELL VOYAGER 1200g

Honeywell



NEW!

TYPE	Linear Imager
CONNECTION	USB, Serial, Wedge
SYMBOLGIES	1D BARCODES
SCANNER RANGE	Up to 30CM
WARRANTY	5 Year Return to base

Built on the platform of the world's best-selling single-line laser scanner, Honeywell's Voyager 1200g delivers aggressive scan performance on virtually all linear barcodes, including poor quality and damaged codes. Updated object detection, and automatic in-stand detection and configuration enable class-leading presentation scanning that maximizes throughput. Superior scan performance matched with a reliable design combine to provide a versatile linear scanning solution.

BEST SELLER

5 year manufacturers warranty

HONEYWELL HYPERION 1300g

Honeywell



NEW!

TYPE	Linear Imager
CONNECTION	USB, Serial, Wedge
SYMBOLGIES	1D BARCODES
SCANNER RANGE	Up to 30CM
WARRANTY	5 Year Return to base

Featuring an ideal balance of performance, durability and ergonomics, the Hyperion 1300g linear-imaging scanner provides years of hassle-free scanning, especially in scan-intensive or light industrial applications. Fast intuitive reading of 13 mil barcode out to 18" (457mm), as well as reading of high density barcodes as small as 3 mil are both enabled in a single device, eliminating the need to purchase specialty scanners.

5 year manufacturers warranty

Barcode Scanners & Readers

Honeywell

HONEYWELL VOYAGER 9520 / 9540

Honeywell



TYPE	Laser
CONNECTION	USB, Serial, Wedge
SYMBOLOGIES	1D
SCAN SPEED	72 Scans per second
WARRANTY	5 Year Return to base

Voyager hand-held, single-line laser scanners feature patented automatic infrared activation and decode all standard 1D bar codes, including GS1 DataBar™. VoyagerCG also includes CodeGate® technology for menu scanning applications. CodeGate zeroes in on the desired code and completes data transmission with the push of a single button.

BEST SELLER

5 year manufacturers warranty

HONEYWELL ORBIT 7120

Honeywell



TYPE	Laser Omni
CONNECTION	USB, Serial, Wedge
SYMBOLOGIES	1D
OMNI DIRECTIONAL	20 SCAN LINES
WARRANTY	3 Year Return to base

Orbit 7120 – the all-time, best-selling hands-free omnidirectional laser scanner—presents an innovative, elegant and affordable solution for convenience retail applications where counter space is at a premium. Recipient of multiple design honours, Orbit 7120 has an award-winning shape that enables hand-held scanning of large, bulky items.

BEST SELLER

3 year manufacturers warranty

HONEYWELL VOYAGER BT 9535

Honeywell



TYPE	Laser
CONNECTION	USB, Serial, Wedge
SYMBOLOGIES	1D
CORDLESS RANGE	10M
WARRANTY	2 Year Return to base

VoyagerBT combines the freedom of Bluetooth® wireless technology with many of the outstanding features found in all Voyager® series scanners. In addition to automatic infrared activation for bar code detection, VoyagerBT comes equipped with patented RangeGate® technology which allows the device to scan hundreds of bar codes when out of range of a host system.

MOBILE

2 year manufacturers warranty

HONEYWELL FUSION 3780

Honeywell



TYPE	Laser Omni
CONNECTION	USB, Serial, Wedge
SYMBOLOGIES	1D
OMNI DIRECTIONAL	20 SCAN LINES
WARRANTY	3 Year Return to base

The Fusion 3780 combines omnidirectional and single-line laser bar code scanning into a lightweight and ergonomic hand-held form factor. The 20-line scan pattern provides superior scanning over existing single-line scanners, making Fusion ideal for medium-volume retailers including specialty stores, pharmacies and convenience stores.

3 year manufacturers warranty



INTERMEC SF51



MOBILE



TYPE	Imager
CONNECTION	USB, Serial, Wedge
SYMBOLOGIES	1D BARCODES
CORDLESS RANGE	30M
WARRANTY	1 Year Return to base

Intermec's SF51 scanner incorporates a unique, light weight form factor with a magnetic attach/release mechanism to maximize productivity. The unique patent pending design takes "hands free scanning" to a new level. Instead of mounting the scanner onto the user's hands or fingers and thereby restricting use, the SF51 is designed to be worn on the waist, wrist, or chest. The attach/release mechanism can be used without looking at it. This allows the user to quickly and easily access and release the scanner when it's needed, and when done scanning, reattach the SF51 for un-inhibited use of their hands.

1 year manufacturers warranty

INTERMEC SR30



TYPE	Imager
CONNECTION	USB, Serial, Wedge
SYMBOLOGIES	1D
FEATURES	Vista scanning technology
WARRANTY	5 Year Return to base

The Intermec SR30 handheld scanner meets the needs of Point-of-Service (POS) applications in retail, healthcare, office and light industrial settings. Designed to automatically adapt to different interfaces, the SR30 is fast and easy to install, and equally easy to reconfigure. Built for productivity, the lightweight SR30 integrates patented Intermec Vista linear imaging technology to deliver fast, always-accurate scanning even when bar codes are damaged or poorly printed.

5 year manufacturers warranty

INTERMEC SR61T



TYPE	Imager
CONNECTION	USB, Serial, Wedge
SYMBOLOGIES	1D
FEATURES	Vista scanning technology
WARRANTY	3 Year Return to base

The Intermec SR61T handheld scanner family meets the needs of rugged applications in warehouse, distribution and industrial manufacturing, and also supports proof of delivery and point of service applications. Featuring high impact housing that is virtually impenetrable as well as a solid state design, the SR61T scanners exceed industrial and military standards, and can be counted on for use in harsh environments where dust, moisture or extreme temperatures are constants and production uptime is critical. If your enterprise requires data collection tools that are dependable then the SR61T is the product for you.

3 year manufacturers warranty

INTERMEC SR61B



MOBILE



TYPE	Imager
CONNECTION	USB, Serial, Wedge
SYMBOLOGIES	1D
CORDLESS RANGE	100M
WARRANTY	3 Year Return to base

The Intermec SR61B Rugged Wireless Handheld Scanner meets the needs of rugged applications in warehouse, distribution centre and industrial manufacturing settings. The SR61B is engineered to withstand the abuse of industrial environments and to satisfy user demands that hand held scanners be as durable as forklifts. Its high impact housing is virtually impenetrable, and its solid state design provides protection exceeding industrial and military standards. The SR61B thrives in harsh environments where dust, moisture or extreme temperatures are constants and production uptime is critical.

3 year manufacturers warranty



About Motorola

Motorola Solutions connects people through technology. Businesses and government agencies around the world turn to Motorola Solutions innovations when they want highly connected teams that have the information they need throughout their workdays and in the moments that matter most to them.

You can find Motorola Solutions products and services in a wide range of workplaces. From the retail floor to the warehouse floor, and from the small town police station to the most secure government offices, our products support customers who make up the diverse global economy. We are proud that our products support mobile transactions of all kinds, as well as the safety and security of citizens everywhere.

Our customers rely on us for the expertise, services and solutions we provide, trusting our years of invention and innovation experience. By partnering with customers and observing how our products can help in their specific industries, we are able to enhance our customers' experience every day.



MOTOROLA - Re-Defining Barcode Scanning

www.barcodescannersolutions.co.uk

1980:

Symbol Handheld Laser Barcode Scanner

In 1980 Symbol Technologies, Inc. (later Motorola) introduced its first handheld laser barcode scanner, the LS100 (also called LS1000) model.

1991:

Symbol PDF417 Two-Dimensional Symbology

In 1991, Symbol Technologies (later Motorola) developed PDF417 two-dimensional symbology that could encode up to 100 times more data than traditional bar codes. The stacked symbology was capable of storing as many as 2,725 data characters in a single code.

2007:

Symbol Technologies, Inc. Acquisition

Motorola acquired Symbol Technologies, Inc. in 2007 to provide products and systems for enterprise mobility solutions, including rugged mobile computing, advanced data capture and radio frequency identification (RFID).





MOTOROLA LS2208



TYPE	Laser
CONNECTION	USB, Serial, Wedge
SYMBOLOLOGIES	1D BARCODES
RESOLUTION	5mil
WARRANTY	5 Year Return to base

The affordable LS2208 handheld barcode scanner provides fast, reliable scanning in an ergonomic, lightweight form. The wide working range – from near-contact to 17 inches – makes this barcode scanner ideal for retail, hospital, education or government settings. Multiple on-board interfaces ensure integration with a variety of host systems.

5 year manufacturers warranty

MOTOROLA LS1203



TYPE	Linear Imager
CONNECTION	USB, Serial, Wedge
SYMBOLOLOGIES	1D BARCODES
INDUSTRIAL RATING	IP43
WARRANTY	3 Year Return to base

This bi-directional LS1203 hand-held scanner handles all 1D bar codes and is ideal for small retailers. It delivers the functionality, features and reliability needed to improve operational efficiencies from the checkout line to the storeroom. It minimises manual key input – ensuring accuracy in all customer transactions – and it automates paper-based inventory processes. The device easily integrates multiple interfaces to help ensure connectivity to a host and PC system.

3 year manufacturers warranty

MOTOROLA DS6707



TYPE	Imager
CONNECTION	USB, Serial, Wedge
SYMBOLOLOGIES	1D & 2D BARCODES
INDUSTRIAL RATING	IP41
WARRANTY	5 Year Return to base

The flexible Symbol DS6707-HD provides electronics manufacturers with a single affordable device capable of reading virtually every type of bar code used in electronic component assembly. From high density and low contrast marks to 1D, 2D and PDF417 bar codes and images, this single device supports all the data capture functionality workers need on the line, bringing a new level of cost-efficiency and accuracy to electronics component assembly.

5 year manufacturers warranty

MOTOROLA LI4278



TYPE	Laser
CONNECTION	USB, Serial, Wedge
SYMBOLGIES	1D BARCODES
CORDLESS RANGE	100M
WARRANTY	3 Year Return to base

The LI4278 takes 1D bar code scanning to the next level, allowing workers to scan faster and farther as they can capture virtually any 1D bar code. Built for all day and everyday use, the LI4278 offers cordless freedom with Bluetooth compatibility. It also offers better encryption for improved security and better overall wireless performance. The LI4278 is backward compatible with its key accessory – the cradle – which works with its cousins, the LS4278 and DS6878. Superior battery power management delivers the largest number of scans per battery charge to support scan intensive applications. You can use it in dusty and wet environments and it can survive a 6 foot/1.8 m drop.

3 year manufacturers warranty

Barcode Scanners & Readers



MOTOROLA LS3578FZ



TYPE	Laser
CONNECTION	USB, Serial, Wedge
SYMBOLOGIES	1D BARCODES
CORDLESS RANGE	100M
WARRANTY	3 Year Return to base

The Symbol LS3578-FZ rugged bar code scanner features fuzzy logic technology, which allows first-pass reads of nearly any 1D bar code, even when the bar code is dirty or damaged. Integrated Bluetooth® guarantees reliable and secure wireless data transmission between the scanner and host retailers.

MOBILE

3 year manufacturers warranty

MOTOROLA CS1504



TYPE	Laser
CONNECTION	USB, Serial, Wedge
SYMBOLOGIES	1D BARCODES
TECHNOLOGY	BLUETOOTH
WARRANTY	1 Year Return to base

The CS1504 bar code scanner has a compact, go-anywhere design that allows it to fit into a purse or onto a keychain. This "shopping buddy" can scan bar codes from print ads, catalogues or merchandise and then make purchases or shopping lists that can be viewed online. Using the device is simple: just point, click and scan. It captures and stores up to 150 codes.

MOBILE

1 year manufacturers warranty

MOTOROLA CS3000



TYPE	Laser
CONNECTION	USB, Serial, Wedge
SYMBOLOGIES	1D BARCODES
TECHNOLOGY	BLUETOOTH
WARRANTY	1 Year Return to base

The innovative Motorola CS3000 Series enables enterprises to easily implement 1D laser scanning where either mobility or the cost and size of a traditional scanning device is an inhibitor. The tiny device is affordably priced and fits in a pocket or on a lanyard. The CS3000 can be utilized in standalone mode for the batch scanning of bar codes.

MOBILE

1 year manufacturers warranty

MOTOROLA DS9808



TYPE	Imager
CONNECTION	USB, Serial, Wedge
SYMBOLOGIES	1D & 2D BARCODES
OMNI DIRECTIONAL	24 SCAN LINES
WARRANTY	3 Year Return to base

The DS9808-R is a ground-breaking POS device that represents two Motorola firsts. The DS9808-R is not only the first combination 1D/2D bar code scanner and RFID reader, it also represents a new RFID product category – the first combination handheld/hands-free UHF RFID reader.

3 year manufacturers warranty



MOTOROLA LS4208



TYPE	Laser
CONNECTION	USB, Serial, Wedge
SYMBOLOLOGIES	1D BARCODES
RESOLUTION	5mil
WARRANTY	3 Year Return to base

The Symbol LS4208 hand-held laser scanner delivers exceptional performance in an accessible, intuitive package. Its single-circuit board design ensures sturdiness and an ergonomic shape maximises user comfort. Continuous one-pass scanning, an innovative multi-line rastering scan pattern, a wide working range and superior motion tolerance make data capture easy, even for novices.

3 year manufacturers warranty

MOTOROLA LS4278



TYPE	Laser
CONNECTION	USB, Serial, Wedge
SYMBOLOLOGIES	1D BARCODES
CORDLESS RANGE	30M
WARRANTY	3 Year Return to base

The innovative Symbol LS4278 Bluetooth®-enabled cordless bar code scanner delivers superior data capture anywhere in the work-place. Its multi-line rastering pattern eliminates the need for exact aim, enabling scanning within a 50-ft (15-m) radius and allowing operator extra room to move. This laser hand-held device excels in retail, healthcare or light industrial environments, boosting productivity and profitability.

MOBILE

3 year manufacturers warranty

MOTOROLA DS4208



TYPE	Imager
CONNECTION	USB, Serial, Wedge
SYMBOLOLOGIES	1D & 2D BARCODES
RESOLUTION	5mil
WARRANTY	5 Year Return to base

The DS4208 delivers the blazing speed typical of laser scanners on both 1D and 2D bar codes, allowing you to accommodate 2D bar codes without sacrificing scanning quality or performance. Users never need to take time to align the bar code with the scanner or pause between scans. And since you can capture bar codes printed on paper labels or displayed on the screen of a mobile phone, retailers can accommodate customers who download mobile coupons, mobile loyalty cards and more.

5 year manufacturers warranty

MOTOROLA DS6878



TYPE	Imager
CONNECTION	USB, Serial, Wedge
SYMBOLOLOGIES	1D & 2D BARCODES
CORDLESS RANGE	100M
WARRANTY	3 Year Return to base

The DS6878-SR cordless 2D imager offers the complete data capture functionality required to streamline and error-proof everyday processes. Comfortable and easy-to-use, this single device can capture all common bar codes (1D, 2D and PDF417) on labels as well as on mobile phone displays. The optional hands-free presentation cradle enables additional advanced capabilities: signature, document and photo capture.

MOBILE

3 year manufacturers warranty

Barcode Scanners & Readers



MOTOROLA LS7708



TYPE	Laser Omni
CONNECTION	USB, Serial, Wedge
SYMBOLOGIES	1D BARCODES
OMNI DIRECTIONAL	18 SCAN LINES
WARRANTY	2 Year Return to base

The LS7708 scanner provides quick, accurate scanning, helping users save both time and money. Ideal for presentation and swipe scanning, the device combines the ease of hands-free with the versatility of hand-held scanning. Its intuitive design, large scanning window and flexible operation can make checkout faster and more efficient, freeing up employees to focus on customer service. Designed to stand up to the toughest and busiest environments, this scanner is a cost-effective solution for medium- to high-volume retailers.

2 year manufacturers warranty

MOTOROLA LS9208



TYPE	Laser Omni
CONNECTION	USB, Serial, Wedge
SYMBOLOGIES	1D BARCODES
OMNI DIRECTIONAL	24 SCAN LINES
WARRANTY	1 Year Return to base

The LS9208 high-speed bar code scanner saves time and delivers versatility, switching easily between hand-held and hands-free operation. The 100-line rastering omni-directional scan pattern lets you quickly capture codes no matter how they are presented. Its small footprint and integrated Checkpoint Electronic Article Surveillance (EAS) antenna save counter space.

1 year manufacturers warranty

MOTOROLA DS9208



TYPE	Laser Omni
CONNECTION	USB, Serial, Wedge
SYMBOLOGIES	1D & 2D BARCODES
OMNI DIRECTIONAL	18 SCAN LINES
WARRANTY	3 Year Return to base

Whether you need to scan printed bar codes on paper labels or mobile bar codes on the screen of a mobile phone, with the Motorola DS9208, you'll be ready. You get the versatility to scan any 1D or 2D bar code – from the printed labels in retail that identify product and pricing at the register to mobile coupons, mobile gift and loyalty cards, boarding passes and even theatre tickets.

3 year manufacturers warranty

MOTOROLA DS457



NEW!

TYPE	Imager
CONNECTION	USB, Serial, Wedge
SYMBOLOGIES	1D & 2D BARCODES
FEATURES	DIRECT POINT MARKS
WARRANTY	3 Year Return to base

Somewhere, a flight is sold-out at a busy airport and to stay on schedule the passengers must board quickly. The check-out line is growing at a popular boutique and the customers are not happy. An engineer struggles to add direct part marking into his space-constrained product design. The Motorola DS457 Series can help, delivering fast, high-volume hands-free scanning of virtually any bar code – including 1D, 2D and direct part marks. No matter what type of bar code is presented, or whether it is printed on paper, etched into a product or displayed on a mobile phone screen, the DS457 Series provides fast, accurate scanning in a tiny footprint that fits in the most space-constrained areas.

3 year manufacturers warranty



MOTOROLA LS3008



IP53



TYPE	Laser
CONNECTION	USB, Serial, Wedge
SYMBOLOGIES	1D BARCODES
RESOLUTION	13mil
WARRANTY	3 Year Return to base

The Symbol LS3008 rugged hand-held scanner has a lightweight ergonomic design for superior productivity in light industrial, healthcare and retail environments. Designed to deliver maximum reliability and uptime, the single-board construction eliminates multiple circuit boards and connecting ribbon cables – the most common point of failure in scanners.

3 year manufacturers warranty

MOTOROLA LS3408ER



TYPE	Laser
CONNECTION	USB, Serial, Wedge
SYMBOLOGIES	1D BARCODES
CORDLESS RANGE	15M
WARRANTY	2 Year Return to base

The LS3408-ER hand-held corded scanner captures 1D bar codes in the harshest of conditions – even when labels are at varying distances. Featuring the widest working range available, it reads labels as far away as 45 feet and as close as four inches.

MOBILE

2 year manufacturers warranty

MOTOROLA LS3408FZ



IP65



TYPE	Laser
CONNECTION	USB, Serial, Wedge
SYMBOLOGIES	1D BARCODES
RESOLUTION	7.5mil
WARRANTY	3 Year Return to base

Capture all 1D bar codes even when they're dirty or damaged. The rugged handheld corded Symbol LS3408-FZ bar code scanner features fuzzy logic technology for fast and accurate data capture. Two confirmation modes let operators know when a scan is successful. IP65-rated sealing protects the scanner against elements and dust.

3 year manufacturers warranty

MOTOROLA LS3578ER



IP65



TYPE	Laser
CONNECTION	USB, Serial, Wedge
SYMBOLOGIES	1D & 2D BARCODES
CORDLESS RANGE	100M
WARRANTY	3 Year Return to base

Scan all 1D bar codes from practically anywhere with onboard Bluetooth® capability. The Symbol LS3578-ER rugged cordless scanner reads labels as far away as 45 feet and as close as 4 inches, delivering the widest working range of any rugged, hand-held scanner. The scanner gives operators a 150-foot range.

MOBILE

3 year manufacturers warranty

OPTICON

OPTICON OPR 2001

OPTICON



TYPE	Laser
CONNECTION	USB, Serial, Wedge
SYMBOLOGIES	1D & 2D BARCODES
RESOLUTION	5mil
WARRANTY	2 Year Return to base

The OPR2001 features a speed of 100 scans per second. This high performance laser scanner provides a fast and accurate scan, even when barcodes are printed with low contrast. The integrated auto trigger mode together with the dedicated stand enables hands-free operation.

2 year manufacturers warranty

OPTICON OPR 3001

OPTICON

IP54



TYPE	Laser
CONNECTION	USB, Serial, Wedge
SYMBOLOGIES	1D & 2D BARCODES
INDUSTRIAL RATING	IP54
WARRANTY	2 Year Return to base

This high-performance scanning device features a rubberized pistol grip and trigger guard, sealed up to IP 54 standards for operation in dirty and harsh conditions. The OPR3001, withstanding multiple drops up to 2 metres onto concrete, has been awarded with the Good Design Award. This is Japan's most prestigious industrial design award, from the Japan Industrial Design Promotion Organization.

2 year manufacturers warranty

OPTICON OPI3301

BLUETOOTH

OPTICON

NEW!



TYPE	Imager
CONNECTION	USB, Serial, Wedge
SYMBOLOGIES	1D & 2D BARCODES
CORDLESS RANGE	10M BLUETOOTH
WARRANTY	2 Year Return to base

The OPI3301 is a durable, yet comfortable 2D imager. It weighs only 110 grams, which is extremely light for a gun type imager. This solid scanner withstands drops up to 1.5 meter onto concrete. The 1.3 megapixel imager provides the versatility to read all standard 1D and 2D barcode symbologies from any orientation.

The plug and play ability of the OPI3301 allows the user to quickly connect and operate the scanner.

2 year manufacturers warranty

OPTICON OPR 3101

OPTICON

IP54



TYPE	Laser
CONNECTION	USB, Serial, Wedge
SYMBOLOGIES	1D & 2D BARCODES
INDUSTRIAL RATING	IP54
WARRANTY	2 Year Return to base

The rugged housing of the OPR3101 is sealed to IP 54 standards and holds up well in environments where water and dust resistance is required. The OPR3101 withstands multiple drops up to 2 metres onto concrete and features a trigger guard to prevent accidental scans. The ergonomic grip provides the user comfort during the day.

2 year manufacturers warranty

OPTICON

OPTICON OPR 3301

OPTICON



TYPE	Laser
CONNECTION	USB, Serial, Wedge
SYMBOLOGIES	1D & 2D BARCODES
RESOLUTION	5mil
WARRANTY	2 Year Return to base

The pistol grip shape of the OPR3301 is specifically designed for ergonomic scanning. It naturally fits in your hand, enabling comfortable use all day. The scanner weighs about 100 grams. The housing provides reliable operation and protects the engine from drops up to 2 metres onto concrete.

2 year manufacturers warranty

OPTICON OPI 2201

OPTICON



TYPE	Laser
CONNECTION	USB, Serial, Wedge
SYMBOLOGIES	1D & 2D BARCODES
RESOLUTION	5mil
WARRANTY	2 Year Return to base

The OPI2201, withstanding multiple drops up to 1.5 metres onto concrete, is designed for aggressive reading of barcodes from varying distances, creating sharp contrast images from 5 cm up to 1.5 meter. Even barcodes on difficult to reach angles can easily be scanned.

2 year manufacturers warranty

OPTICON C 37

OPTICON



TYPE	CCD
CONNECTION	USB, Serial, Wedge
SYMBOLOGIES	1D BARCODES
RESOLUTION	5mil
WARRANTY	2 Year Return to base

This lightweight and ergonomically shaped device fits comfortably in the hand, making it suitable for all-day scanning applications. The C37 is available with the most popular interfaces: USB, Keyboard Wedge and RS232. This device is easily programmable to suite your application.

2 year manufacturers warranty

OPTICON OPR 3201

OPTICON



TYPE	Laser
CONNECTION	USB, Serial, Wedge
SYMBOLOGIES	1D & 2D BARCODES
RESOLUTION	5mil
WARRANTY	2 Year Return to base

The scanning parts of the OPR3201 are positioned near the central core of the grip to stabilize the hand movement while scanning. Together with the large grip, this makes it easier and more comfortable to target the barcodes.

2 year manufacturers warranty



Supplyline and Printers - the smart choice

www.barcodeprintersolutions.co.uk



SUPPLYLINE I.D. offering the best brands and the widest choice of label, receipt and mobile printers on the market.

Supplyline sells all the major brands and types of printers in our industry. From simple Desktop label printers to Mobile and RFID printers, Kiosk and Plastic ID Card Printers.

Markets include:

- Healthcare
- Transport and Logistics
- Retail
- Manufacturing
- Hospitality
- Education
- Government





DESKTOP PRINTERS



RECEIPT & EPOS PRINTERS



MID RANGE PRINTERS



CARD & ID PRINTERS



HIGH PERFORMANCE PRINTERS



PORTABLE & MOBILE PRINTERS





ABOUT CITIZEN:

Citizen Systems Europe operates from locations in the UK and Germany covering Europe, Middle East and Africa.

Citizen offers a range of thermal label & barcode printers, portable and dot matrix printers, mini and POS printers as well as printer mechanisms and kiosk solutions. These are sold in to markets as diverse as industrial, retail, healthcare and mobile applications.



CITIZEN CLS-621



WIDTH	104mm
SPEED	6" per second
INTERFACE	USB & Serial
RESOLUTION	203DPI
WARRANTY	1 Year Return to base

CLS 621 Industrial Desktop barcode printers feature best-in-class performance, reliability and durability. Look at some of the fantastic features of the CL-S521, CL-S621 and CL-S631. Durable all-metal mechanism Citizen's Hi-Lift™ design. Easy media loading, durable design and long-life printing Cross-Emulation™ switch between Zebra® ZPL® and Datamax®.

NEW!

1 year manufacturers warranty

Citizen CLS-521



WIDTH	104mm
SPEED	6" per second
INTERFACE	USB
RESOLUTION	203DPI
WARRANTY	1 Year Return to base

CLS 521 Industrial Desktop barcode printers feature best-in-class performance, reliability and durability. Look at some of the fantastic features of the CL-S521, CL-S621 and CL-S631. Durable all-metal mechanism Citizen's Hi-Lift™ design. Easy media loading, durable design and long-life printing Cross-Emulation™ switch between Zebra® ZPL® and Datamax®.

NEW!

1 year manufacturers warranty

CITIZEN CLS-703



WIDTH	104mm
SPEED	8" per second
INTERFACE	USB & Serial
RESOLUTION	300DPI
WARRANTY	1 Year Return to base

CL-S700 series with Hi-Open™ heavy duty metal case: opens "vertically" meaning that the footprint of the printer does not change when the cover is open. Soft-close top cover for user safety and user courtesy. Front Loading Rewinder on R models for easy rewinding of the backing paper when printing in "peel mode" or when printing batches of labels. The front of the printer drops down for the simplest rewriter operation ever seen!

1 year manufacturers warranty

CITIZEN Micro HumanTech

CITIZEN CLS-631



WIDTH	104mm
SPEED	6" per second
INTERFACE	USB & Serial
RESOLUTION	300PI
WARRANTY	1 Year Return to base

CLS 631 Industrial Desktop barcode printers feature best-in-class performance, reliability and durability. Look at some of the fantastic features of the CL-S521, CL-S621 and CL-S631. Durable all-metal mechanism Citizen's Hi-Lift™ design. Easy media loading, durable design and long-life printing Cross-Emulation™ switch between Zebra® ZPL® and Datamax®.

NEW!

1 year manufacturers warranty

CITIZEN CL-S400DT



WIDTH	104mm
SPEED	6" per second
INTERFACE	USB & Serial
RESOLUTION	203DPI
WARRANTY	1 Year Return to base

Versatile Media Support Fanfold media stacks for boarding passes and tickets. Roll paper support for labels, tags or continuous media. Autocutter and Peeler options. Fast print speed and operation. Up to 150 mm/s (6 inches per second). Quick media changing with simple Hi-Lift™ design/ LCD Control Panel Two-colour backlight clearly indicates printer status Easy-to-read messages and powerful configuration Cross-Emulation™. Automatically switch between Zebra® ZPL® and Datamax® BASIC Interpreter supports other ticketing emulations.

1 year manufacturers warranty

CITIZEN CLP 8301 wide format



WIDTH	108mm
SPEED	4" per second
INTERFACE	USB / Parallel & Serial
RESOLUTION	203DPI
WARRANTY	1 Year Return to base

The CLP 8301 is designed for all those times when you need to print up to 8.6 inches (220mm) for example an 8-inch (200mm) or 6-inch (150mm) wide label. Typical applications include pallet labels (Odette, SSCC), chemical drum labels and A4 or A5 sized labels. Also widely used as a continuous laser replacement printer for delivery notes and picking lists in warehouses using the optional 'tear wait' or autocutter options.

1 year manufacturers warranty

CITIZEN CLS-700



WIDTH	104mm
SPEED	7-10" per second
INTERFACE	USB
RESOLUTION	203DPI
WARRANTY	1 Year Return to base

CLS-700 series with Hi-Open™ heavy duty metal case: opens "vertically" meaning that the footprint of the printer does not change when the cover is open. Soft-close top cover for user safety and user courtesy. Front Loading Rewinder on R models for easy rewinding of the backing paper when printing in "peel mode" or when printing batches of labels. The front of the printer drops down for the simplest rewinder operation ever seen!

1 year manufacturers warranty



DATAMAX EX2 Class



WIDTH	104mm
SPEED	4" per second
INTERFACE	USB / Parallel & Serial
RESOLUTION	203DPI
WARRANTY	1 Year Return to base

Ex2 is setting a new standard in the entry-level thermal printer market. Datamax has combined affordable printing, high quality performance, and the latest technology for all your printing demands.

1 year manufacturers warranty

DATAMAX E4205 Class MkIII



WIDTH	108mm
SPEED	5" per second
INTERFACE	USB / Parallel & Serial
RESOLUTION	203DPI
WARRANTY	1 Year Return to base

E-Class Mark III is a family of compact desktop thermal printers that are designed for a wide variety of industries and applications that require a reliable and cost effective barcode printer.

1 year manufacturers warranty

DATAMAX E4304 Class MkIII



WIDTH	108mm
SPEED	4" per second
INTERFACE	USB / Parallel & Serial
RESOLUTION	300DPI
WARRANTY	1 Year Return to base

E-Class Mark III is a family of compact desktop thermal printers that are designed for a wide variety of industries and applications that require a reliable and cost effective barcode printer.

1 year manufacturers warranty

DATAMAX E Class Class MkII



WIDTH	103.23mm
SPEED	5" Per Second
INTERFACE	USB / Parallel & Serial
RESOLUTION	203, 300DPI
WARRANTY	1 Year Return to base

E-Class Mark II thermal desktop printer offers a proven and reliable label and tag printing solution in a compact footprint. It is ideal for a vast number of diverse applications.

1 year manufacturers warranty



DATAMAX M Class



WIDTH	108mm
SPEED	10" per second
INTERFACE	USB, Parallel , Serial, LAN
RESOLUTION	203, 300DPI
WARRANTY	1 Year Return to base

The M-Class is a compact, industrial-strength printer that offers outstanding value with a broad range of features. The smaller footprint is ideal when users need the power of industrial printers but must consider space limitations.

1 year manufacturers warranty

DATAMAX I Class



WIDTH	105.7mm
SPEED	12" per second
INTERFACE	USB, Parallel , Serial, LAN
RESOLUTION	203, 300, 400, 600DPI
WARRANTY	1 Year Return to base

I-Class is a comprehensive, cost-effective industrial barcode printer, offering reliability and flexibility. With its revolutionary modular design, most I-Class options are field installable. I-Class printers are ideal for Shipping & Receiving, Product Identification, Pharmacy labeling, and Asset Tracking.

1 year manufacturers warranty

DATAMAX H Class



WIDTH	216.4mm
SPEED	12" per second
INTERFACE	USB, Parallel , Serial, LAN
RESOLUTION	203, 300, 400, 600DPI
WARRANTY	1 Year Return to base

H-Class is a rugged and versatile printer that offers one of the most feature rich solutions for dynamic enterprise applications and is twice as fast as other printers in its class. The H-Class is ideal for high volume label printing in manufacturing, warehouse, transportation, and high resolution labeling. H-Class reduces the total cost of ownership.

1 year manufacturers warranty

DATAMAX H Class Wide



WIDTH	162-216mm
SPEED	8-12" per second
INTERFACE	USB, Parallel , Serial, LAN
RESOLUTION	203, 300DPI
WARRANTY	1 Year Return to base

The H-Class wide series are high performance printers perfect for printing midsize labels used in the automotive industry, manufacturing and pallet labels.

1 year manufacturers warranty



ABOUT INTERMEC:

Intermec offers a complete range of thermal printers to fit any application and printing environments. Our printers are designed with 40 years of experience, and the latest networking, wireless and software security are built in.

What makes Intermec printers different?

- The industry's only Smart Printers
- The only CCX and WiFi certified printers in the industry
- The only printers with ipv6 support to future-proof your investment



INTERMEC PD-41 / PD-42 SERIES



WIDTH	104-105.7mm
SPEED	2-6" per second
INTERFACE	USB, Serial, LAN
RESOLUTION	203-300DPI
WARRANTY	1 Year Return to base

PD41 is flexible and programmable, enabling customers to optimize their printing operations, streamline deployment, and achieve quick return on investment. Built to meet the needs of mission-critical applications, the rugged PD41 delivers advanced, secure connectivity. PD42 is flexible and programmable, enabling customers to optimize their printing operations.

1 year manufacturers warranty

INTERMEC PF-8 SERIES



WIDTH	118mm
SPEED	2-4" per second
INTERFACE	USB & Serial
RESOLUTION	203-300DPI
WARRANTY	1 Year Return to base

PF8 printers include flexible, industry standard connectivity - including parallel, serial, USB and optional internal Ethernet - enabling easy, drop-in installation in networked environments. With their compact size, common media specifications, and ESIM printer language, the PF8 printers provide an easy migration path from legacy Intermec printers such as the PC4, as well as from other desktop printers using the EPL printer language.

BEST SELLER

1 year manufacturers warranty

INTERMEC PC23D / PC43D / PC43T



WIDTH	60mm or 118mm
SPEED	8" per second
INTERFACE	USB, Serial, LAN
RESOLUTION	203 or 300DPI
WARRANTY	1 Year Return to base

Available in 4" direct thermal (PC43d) or 4" thermal transfer (PC43t), the Intermec PC43d / PC43t is designed to set a new standard in user friendliness and flexibility. PC43d / PC43t feature a multi-language LCD or Icon-graphics user interface for maximum ease of use. User-installable connectivity options and accessories ensure that PC43d / PC43t will fit your business needs both today and tomorrow. Its low cost and fast operation make the PC43d / PC43t the smart choice for light-duty labeling applications.

NEW!

1 year manufacturers warranty



INTERMEC PM43 & PM43C



WIDTH	104 - 108mm
SPEED	10-12" Per Second
INTERFACE	USB, Serial, LAN
RESOLUTION	203DPI, 305DPI, 406DPI
WARRANTY	1 Year Return to base

PM43/PM43c mid-range industrial label printers are ready to perform. Reduce workforce training and support with the tamper-proof, 10-language, color touch-screen or universal-icon interface. The PM43/PM43c is a third-generation Intermec industrial printer designed to maximize your uptime. Count on the PM43/PM43c to deliver quick deployment, the fastest print speed in its class, and proven reliability.

NEW!

1 year manufacturers warranty

INTERMEC PX-4i SERIES



WIDTH	110-112mm
SPEED	4-12" per second
INTERFACE	USB, Serial, LAN
RESOLUTION	203-300-406DPI
WARRANTY	1 Year Return to base

PX4i is flexible and programmable, enabling customers to optimize their printing operations, streamline deployment, and achieve quick return on investment. Built to meet the needs of round-the-clock, mission-critical applications.

1 year manufacturers warranty

INTERMEC PX-6i SERIES



WIDTH	167.4mm
SPEED	4-9" per second
INTERFACE	USB, Serial, LAN
RESOLUTION	203-300DPI
WARRANTY	1 Year Return to base

PX6i is flexible and programmable, enabling customers to optimize their printing operations, streamline deployment, and achieve quick return on investment.

1 year manufacturers warranty

INTERMEC PF-2i & PF-4i SERIES



WIDTH	56mm & 104mm
SPEED	4-8" per second
INTERFACE	USB, Parallel, Serial, LAN
RESOLUTION	203DPI or 300DPI
WARRANTY	1 Year Return to base

PF2i is flexible and programmable, enabling customers to optimize their printing operations, streamline deployment, and achieve quick return on investment. Built to meet the needs of mission-critical applications

PF4i's smart design features support increased productivity in demanding environments. As a Smart Printer, the PM4i can host stand-alone applications, developed through Intermec Fingerprint programming language, which reduce errors and streamline operational processes.

1 year manufacturers warranty

TOSHIBA

ABOUT TOSHIBA-TEC:

As a member of the TOSHIBA TEC Corporation based in Japan, TOSHIBA TEC Europe has financial stability from one of the world's leading technology companies, while still retaining the high levels of customer service and efficiency usually associated with smaller organisations.

Our prime focus is to provide and support high quality, reliable products that are simple for the operator to use and offer value for money.

TOSHIBA-TEC are a major player in Europe for Barcode Printers and Ribbons.



TOSHIBA-TEC BSA-4TM

TOSHIBA



WIDTH	101mm
SPEED	6" per second
INTERFACE	USB & Serial
RESOLUTION	203DPI
WARRANTY	1 Year Return to base

The Toshiba B-SA4 barcode label printer provides the functionality and robustness of an industrial printer with the compact footprint and ease of use of a desktop printer. Metal casing for industrial environments.

1 year manufacturers warranty

TOSHIBA-TEC BSA-4TP

TOSHIBA



WIDTH	104-105.7mm
SPEED	6" per second
INTERFACE	USB
RESOLUTION	203-300DPI
WARRANTY	1 Year Return to base

The Toshiba B-SA4 barcode label printer provides the functionality and robustness of an industrial printer with the compact footprint and ease of use of a desktop printer. Plastic casing for office environments.

1 year manufacturers warranty

TOSHIBA-TEC B-EV4D / T

TOSHIBA



WIDTH	104mm
SPEED	4-5" per second
INTERFACE	USB / Parallel & Serial
RESOLUTION	203 or 300DPI
WARRANTY	1 Year Return to base

For fast, on-demand labelling and ticketing direct from your desktop, look no further than the trustworthy B-EV4 range from Toshiba.

With market-leading features, exceptional build quality and reliability, produce professional labels quickly and easily at the touch of a button.

Legendary build quality in a tough plastic case.

1 year manufacturers warranty

TOSHIBA

TOSHIBA-TEC B-SX4

TOSHIBA



WIDTH	104-105.7mm
SPEED	10" per second
INTERFACE	USB / Parallel & Serial
RESOLUTION	203-300DPI
WARRANTY	1 Year Return to base

B-SX4 thermal transfer, direct thermal, printers extend the tradition of technical innovation of the TOSHIBA TEC high-class industrial printers. Built to succeed the B-472,B-572 machines, they provide superior performance and reliability. The integrated RFID capability offers flexible options for virtually every RFID need on the labelling market.

1 year manufacturers warranty

TOSHIBA-TEC B-SX6 & BSX-8

TOSHIBA



WIDTH	170.6 or 213.3mm
SPEED	8" per second
INTERFACE	USB & Serial
RESOLUTION	305DPI
WARRANTY	1 Year Return to base

B-SX8 305 dpi, 170.5 mm / 213.3 mm wide print heads facilitate speedy printing of large format compliance labels. A floating print head mechanism guarantees superb print quality with reduced friction and a flat paper path. The ribbon save function conserves the ribbon when it is not required, reducing costs.

1 year manufacturers warranty

TOSHIBA-TEC B-EX4T

TOSHIBA



WIDTH	104mm
SPEED	14" per second
INTERFACE	USB
RESOLUTION	200-300DPI
WARRANTY	1 Year Return to base

B-EX series - a premium range of industrial printers with a mid-range price tag for a wide variety of applications. A high-end product with a low price, Superior performance and speed. Low power consumption, Ease of use and maintenance. Emulation capabilities, Fast ROI, low TCO, Long life printhead.

NEW!

1 year manufacturers warranty

TOSHIBA-TEC B-SX5

TOSHIBA



WIDTH	127.5mm
SPEED	8" per second
INTERFACE	USB
RESOLUTION	306DPI
WARRANTY	1 Year Return to base

B-SX5 thermal transfer, direct thermal, printers extend the tradition of technical innovation of the TOSHIBA TEC high-class industrial printers. Built to succeed the B-472,B-572 machines, they provide superior performance and reliability. The integrated RFID capability offers flexible options for virtually every RFID need on the labelling market.

1 year manufacturers warranty

THE G-SERIES™ PRINTERS FROM ZEBRA

EVERY- THING COVERED

Zebra® G-Series printers offer best-in-class **speed** and **performance** and are **compact** enough to fit the smallest of spaces.

From the feature-rich GX™ models to the basic GK™ models, the G-Series compact printers support a variety of applications and environments. They're also extremely simple to integrate and manage.

Choose from direct-thermal, the most compact desktop thermal printer in its class, or the thermal-transfer model which has an easy-loading ribbon system. Built with ease of use and durability in mind, Zebra's G-Series printers provide a reliable desktop printing solution that's always a perfect fit.

ZEBRA G-SERIES PRINTERS

To find out how the G-Series printers are best in class, scan the bar code below or see the range at 01403 865 111
info@supplylineid.com
www.supplylineid.com





ZEBRA LP-TLP 2844 SERIES



WIDTH	104mm
SPEED	4" per second
INTERFACE	USB / Parallel & Serial
RESOLUTION	203DPI
WARRANTY	1 Year Return to base

LP 2844 Direct thermal bar code label printer is ideal for applications requiring a space-saving, desktop-size.

TLP 2844 Thermal transfer bar code label printer is ideal for applications requiring a space-saving, desktop-size.

These user-friendly printers deliver optimal performance in today's on-demand, applications.

1 year manufacturers warranty

ZEBRA GX420 SERIES



WIDTH	104mm
SPEED	6" per second
INTERFACE	USB / Parallel & Serial
RESOLUTION	203DPI
WARRANTY	1 Year Return to base

GX420d direct thermal printer offers the widest range of features, and fast 6 inches per second print speed to meet all your low- to medium-volume printing requirements. GX420t thermal transfer printer offers the widest range of features, and fast 6 inches per second print speed to meet all your low- to medium-volume printing requirements.

1 year manufacturers warranty

ZEBRA GK420 SERIES



WIDTH	108mm
SPEED	5" per second
INTERFACE	USB / Parallel & Serial
RESOLUTION	203, 300DPI
WARRANTY	1 Year Return to base

GK420d direct thermal printer offers the best value in a basic desktop printer, featuring a fast 5 inches per second print speed to meet your low- to medium-volume printing requirements. GK420t thermal transfer printer offers the best value in a basic desktop printer, featuring a fast 5 inches per second print speed to meet your low- to medium-volume printing requirements.

1 year manufacturers warranty

ZEBRA GX430T



WIDTH	104mm
SPEED	4" per second
INTERFACE	USB / Parallel & Serial
RESOLUTION	300DPI
WARRANTY	1 Year Return to base

GX430t thermal transfer printer offers the widest range of features, 4 inches per second print speed and 300 dpi resolution to meet all your low- to medium-volume printing requirements. The GX430t has a sleek and compact design, boasts the easiest ribbon loading system on the market.

1 year manufacturers warranty



ZEBRA HC100 SERIES



WIDTH	127mm
SPEED	2" per second
INTERFACE	USB & Serial
RESOLUTION	300DPI
WARRANTY	1 Year Return to base

HC100 Patient ID. Solution makes wristband printing easier and more cost-effective than laser solutions.

This solution combines the reliable HC100 direct thermal printer with easy-to-load cartridges containing Zebra's durable Z-Band® wristbands.

WRISTBAND

1 year manufacturers warranty

ZEBRA ZT220 / ZT230



NEW!

WIDTH	104mm
SPEED	6" Per Second
INTERFACE	USB, Serial, LAN
RESOLUTION	203DPI, 305DPI
WARRANTY	1 Year Return to base

Designed with ease-of-use in mind, the ZT200 Series offers reliable printing for a wide variety of applications. Whether you are adopting bar coding for the first time, upgrading your printers or replacing printer models, the ZT200 Series offers the right choice for most labeling applications. The ZT220 Industrial Printer is Zebra's most affordable industrial printer offers a high impact polymer case and simple single-use three button interface for simpler applications. The ZT230 Industrial Printer has the durability of a metal frame and cover with an icon based LCD graphical user interface and larger ribbon capacity for long lasting use in demanding environments.

1 year manufacturers warranty

ZEBRA ZM400 SERIES



WIDTH	104mm
SPEED	8-10" per second
INTERFACE	USB / Parallel & Serial
RESOLUTION	203-300DPI
WARRANTY	1 Year Return to base

ZM400 includes additional productivity-enhancing features and modern, flexible network connectivity for easy system integration in most manufacturing, warehousing and business applications. This industrial/commercial workhorse also delivers efficient 4-inch-wide labeling.

BEST SELLER

1 year manufacturers warranty

ZEBRA ZM600 SERIES



WIDTH	168mm
SPEED	8-10" per second
INTERFACE	USB / Parallel & Serial
RESOLUTION	203-300DPI
WARRANTY	1 Year R

eturn to base

ZM600 includes additional productivity-enhancing features and modern, flexible network connectivity for easy system integration in most manufacturing, warehousing and business applications. This industrial/commercial workhorse also delivers efficient 6-inch-wide labeling.

1 year manufacturers warranty



ZEBRA 105SL SERIES



WIDTH	104mm
SPEED	8" per second
INTERFACE	USB & Serial
RESOLUTION	203-300DPI
WARRANTY	1 Year Return to base

105SL combines enhanced memory, processing capacity, and features with rugged and reliable all-metal construction. Proven platform longevity plus fast processing and print speed make it the choice of experienced users who value reliability, productivity, consistent print quality and network compatibility.

1 year manufacturers warranty

ZEBRA 110Xi4 SERIES



WIDTH	102mm
SPEED	14" per second
INTERFACE	USB & Serial
RESOLUTION	203-300-600DPI
WARRANTY	1 Year Return to base

The workhorse of the Xi product line, the 110Xi4 was built on the legacy of the Xi series of products. The 110Xi4 was developed to improve overall operational productivity and efficiency in a variety of environments.

1 year manufacturers warranty

ZEBRA 140Xi4 SERIES



WIDTH	108mm
SPEED	7-10" per second
INTERFACE	USB / Parallel & Serial
RESOLUTION	203-300DPI
WARRANTY	1 Year Return to base

Another addition to Zebra's Xi4 product line is the 140Xi4. Known for rugged durability and performance, the new Xi4 brings several additional features to high-volume, mission-critical applications and environments.

1 year manufacturers warranty

ZEBRA 170Xi4–220Xi4 SERIES



WIDTH	168-216mm
SPEED	10-12" per second
INTERFACE	USB / Parallel & Serial
RESOLUTION	203-300DPI
WARRANTY	1 Year Return to base

Industrial-strength 170Xi4 can print large volumes of labels, promoting greater productivity with fewer roll changes. Or it can execute intricate, high-resolution print applications. Designed to produce large labels up to 8.5" the 220Xi4 is ideal for industrial applications.

1 year manufacturers warranty



Perfect solutions for POS and Retail

www.supplylineid.com

POS PRINTERS
& TOUCH
SCREENS

TOUCH SCREENS



CASH DRAWERS



SWIPES READERS



Solutions for POS / Retail and Hospitality



CITIZEN Micro HumanTech

CITIZEN CTS-2000 POS

CITIZEN
Micro HumanTech



WIDTH	58-82mm
SPEED	8.66" per second
INTERFACE	USB
RESOLUTION	203DPI
WARRANTY	1 Year Return to base

With its unique high-speed DMA (Direct Memory Access) the CTS2000 is a two-colour, thermal printer capable of "real-world" speeds up to 220 mm/second. Special splash water resistant design for kitchens and restaurants. Auto cutter integrated as standard.

1 year manufacturers warranty

CITIZEN CTS-310II POS

CITIZEN
Micro HumanTech



WIDTH	58-80mm
SPEED	6.2" per second
INTERFACE	USB & RS232
RESOLUTION	203DPI
WARRANTY	1 Year Return to base

The CTS310II is a compact entry-level priced printer with an impressive speed. Dual USB & RS232 interface as standard make this a useful addition for adding external POS items. A special automatic cutter unit is able to remove paper jams automatically and separates printouts.

NEW!

1 year manufacturers warranty

CITIZEN CTS310 POS

CITIZEN
Micro HumanTech



WIDTH	48-72mm
SPEED	6.29" per second
INTERFACE	USB
RESOLUTION	203DPI
WARRANTY	1 Year Return to base

CTS310 is not only extremely compact and high-performance, but also ecologically efficient. Thanks to an ENERGY STAR® power supply, paper-save function, halogen-free housing and packaging made of recycled material, it deserves the green light in every respect.

1 year manufacturers warranty

CITIZEN CTS601 POS

CITIZEN
Micro HumanTech



WIDTH	58-83mm
SPEED	8" per second
INTERFACE	USB
RESOLUTION	203DPI
WARRANTY	1 Year Return to base

CT-S601 offers you a powerful and well priced thermal receipt printer. Fast receipt and voucher printing at up to 200mm Per Second. User friendly handling for easy configuration. Auto Cutter and power supply are integrated as standard.

1 year manufacturers warranty



EPSON TM-T88v



WIDTH	25-30mm
SPEED	72mm per second
INTERFACE	USB / Serial
RESOLUTION	15-20CPI
WARRANTY	1 Year Return to base

TM-T88V is a true breakthrough in the development of POS receipt printers, and the results are better for your budget and the environment. This is most clearly demonstrated with the Paper Reduction Function, which cuts down on waste and cost. Green credentials are further proved by this being the first thermal receipt printer to be Energy Star qualified.

BEST SELLER

1 year manufacturers warranty

EPSON TM-T90



WIDTH	54-72mm
SPEED	170mm per second
INTERFACE	USB / Serial
RESOLUTION	15-20CPI
WARRANTY	1 Year Return to base

TM-T90 Thermal printer offers high-speed receipt printing, with a 2-colour option, as well as an advanced barcode (including 2-dimensional) and graphics capability.

Suitable for use in retail and hospitality environments. Practical features include drop-in paper load, large receipt roll handling and an auto-cutter.

1 year manufacturers warranty

EPSON TM-T70



WIDTH	72mm
SPEED	170mm per second
INTERFACE	USB
RESOLUTION	180DPI
WARRANTY	1 Year Return to base

The first POS printer with front-facing controls, the TM-T70 is specifically designed for under counter operations in retail and hospitality. With a range of core, user-friendly features including front paper feeding with drop-in paper rolls, auto-cutter, remote maintenance counter and easy access operator covers, the TM-T70 enables fast, easy transactions and enhanced customer service.

1 year manufacturers warranty

EPSON TM-L90



WIDTH	54-72mm
SPEED	170mm per second
INTERFACE	USB / Serial
RESOLUTION	203DPI
WARRANTY	1 Year Return to base

TM-L90 high quality printer offers fast label and barcode printing in one compact unit. With its software utility you can quickly design custom labels and barcodes and print in one- or two-colours on a variety of print stocks. It supports continuous printing on liner labels and cost-effective one- and two-colour thermal labels are available from Epson in a variety of sizes.

1 year manufacturers warranty



EPSON TM-3400 COLOUR



WIDTH	104mm
SPEED	92mm per second
INTERFACE	USB 2 / WiFi
RESOLUTION	720 x 360 DPI
WARRANTY	1 Year Return to base

Using long lasting pigment ink and a wide choice of media the TM-3400 will deliver 'on demand' colour labels in any environment: In healthcare - print critical information in colour on patient wristbands, specimens and blood bags.

In retail - use colour to promote in-store offers and create labels for accurate tracking. For events - print tickets, passes, wristbands and badges.

COLOUR

1 year manufacturers warranty

EPSON TM-H6000iv



WIDTH	216mm
SPEED	12" per second
INTERFACE	Serial / parallel / USB
RESOLUTION	203-300 DPI
WARRANTY	1 Year Return to base

Shrink paper usage by up to 31 percent with the TM-H6000iv's paper save feature. Instead of squeezing logos and text, which causes distortion and can compromise legibility, the 'paper save' feature automatically reduces blank spaces and barcode height. It also prints the top of the next receipt before cutting the current one to decrease the top margin.

Use less power and lower utility overheads with ENERGY STAR-qualified power efficiency.

1 year manufacturers warranty

EPSON TM-U295



WIDTH	104mm
SPEED	21 lines per second
INTERFACE	Serial / Parallel
RESOLUTION	13.9-15.9 CPI
WARRANTY	1 Year Return to base

TM-U295 is the world's smallest slip printer, perfect for POS terminals. With four print sizes, four print directions and a "page mode" that lets you print practically anywhere on the document, it offers all the options you need. The TM-U295 is also equipped with a host of user-friendly features, such as an easy-to-operate touch panel and an automatic paper eject function.

1 year manufacturers warranty

EPSON TM-L500



WIDTH	54-79mm
SPEED	6-10" per second
INTERFACE	USB / Serial
RESOLUTION	203-300 DPI
WARRANTY	1 Year Return to base

The TM-L500 helps cut your ticket queues with its fast print speeds, and is compatible with many types of paper - including thick media for high-quality printouts with both text and graphics.

Enjoy even more media flexibility with the optional external paper supply. Switching between different paper types is painless thanks to the paper detection sensors.

1 year manufacturers warranty



Touch Monitors & Cash Drawers



www.supplylineid.com

About APG Cash Drawers:

For more than 30 years, APG Cash Drawer has been designing and delivering cash drawers with a variety of size, colour, interface, and integration options. An APG cash drawer will provide years of smooth, trouble free service with virtually no downtime, no service

required, and no headaches.

Our cash drawers are so well constructed and so reliable that our customers install them and forget them - even in the most demanding environments.

Series 4000

- Lifetime Limited Warranty
- 8 Coin / 5 Notes
- 4 Million+ Cycles



Fliptop

- 2 Year Warranty
- 8 Coin / 4-6 Notes
- 1 Million+ Cycles



Series 1517

- 2 Year Warranty
- 8 Coin / 4 Notes
- 4 Million+ Cycles



Performance. Flexibility. Serviceability.



RETAIL:

PUTTING RETAIL IN TOUCH



HOSPITALITY:

TOUCH, THE PERFECT SOLUTION FOR DINING OUT OR SLEEPING IN



HEALTHCARE:

TOUCH IS THE TREND FOR OPERATOR INTERFACE



POS Scanners

www.supplylineid.com

POS PRINTERS
& TOUCH
SCREENS



DATALOGIC



Honeywell



MOTOROLA



About Unitech:

Unitech was founded in 1979 in Taipei, Taiwan, to provide the local market with customized microprocessor-based automation systems. To meet the demands of a growing industry, Unitech created a business segment to focus solely on data collection technology in 1985. Now, with over 30 years of experience in the industry, Unitech has grown to



be a successful global corporation with over 500 employees worldwide and manufactures a wide range of AIDC products including bar code scanners, mobile computers, magnetic stripe readers, fixed mount terminals, and keyboards.



Unitech MS240

- Over 1 Million Card Swipes
- PS/2, RS232, or USB interface
- Bi-Directional Swipe Reading



Unitech MS246

- Over 1 Million Card Swipes
- Reads Up to 3 Tracks
- Bi-Directional Swipe Reading



Unitech MSR120

- Easily desktop or wall mounted
- RS232 emulation on USB interface
- Bi-Directional Swipe Reading



MOBILE

| ACCURATE

| RELIABLE



FAST, ACCURATE PRINTING AT YOUR FINGERTIPS

By allowing you to print your labels at exactly the same moment you take a patient's blood, the QLn 220™ printer drastically reduces the risk of errors. This new model also delivers higher-quality printing and offers a variety of useful, proactive alerts.

And while it's as light and portable as ever, it now has a larger, sharper, easy-to-navigate display, so the only thing you'll find difficult is making a mistake.

TAKE A CLOSER LOOK AT THE NEW QLn™ SERIES

To find out more, scan the bar code on the right, or see the range at

SUPPLYLINE AUTO ID LTD

Oakendene ind. Estate, Cowfold, West sussex, RH13 8AZ
01403 865 111

info@supplylineid.com / www.supplylineid.com





ZEBRA EM220 MOBILE



WIDTH	58mm
SPEED	3" per second
INTERFACE	USB2 & Serial
RESOLUTION	203DPI
WARRANTY	1 Year Return to base

EM 220 mobile printer. This lightweight, ergonomically designed printer with optional Bluetooth and magnetic card reader will enable you to accept credit cards at the point of service and within customer sight.

1 year manufacturers warranty

ZEBRA MZ220 MOBILE



WIDTH	48.3mm
SPEED	3" per second
INTERFACE	USB & IrDA
RESOLUTION	203DPI
WARRANTY	1 Year Return to base

MZ 220 economical receipt printers. Each tiny MZ printer can be a smart assistant for mobile receipt printing applications where you need quick, simple receipts on demand. Use Bluetooth® or 802.11b/g to connect to a handheld Terminal or PDA.

1 year manufacturers warranty

ZEBRA MZ320 MOBILE



WIDTH	73.7mm
SPEED	3" per second
INTERFACE	USB & IrDA
RESOLUTION	203DPI
WARRANTY	1 Year Return to base

MZ 320 economical receipt printers. Each tiny MZ printer can be a smart assistant for mobile receipt printing applications where you need quick, simple receipts on demand.

1 year manufacturers warranty

ZEBRA RW220 MOBILE



WIDTH	56mm
SPEED	3" per second
INTERFACE	USB2 & Serial
RESOLUTION	203DPI
WARRANTY	1 Year Return to base

RW 220 is a 2-inch mobile printer ideal for receipts on the go. Its modular design allows users to choose among secure wireless options and card readers.

1 year manufacturers warranty



ZEBRA RW420 MOBILE



WIDTH	104mm
SPEED	3" per second
INTERFACE	USB2 & Serial
RESOLUTION	203DPI
WARRANTY	1 Year Return to base

RW 420 is a mobile printer ideal for printing delivery receipts and invoices on the go. Its modular design allows users to choose among wireless options, card readers, and integral accessories.

1 year manufacturers warranty

ZEBRA QL220 MOBILE



WIDTH	48mm
SPEED	3" per second
INTERFACE	USB2 & Serial
RESOLUTION	203DPI
WARRANTY	1 Year Return to base

QL 220 Plus direct thermal mobile printer delivers print widths up to 1.89" (48 mm). In addition it offers the rugged construction, user-friendly options, and flexible QuickLink connectivity that have made Zebra's QL 220 and other QL series printers so popular.

1 year manufacturers warranty

ZEBRA QL320 MOBILE



WIDTH	73.6mm
SPEED	3" per second
INTERFACE	USB2 & Serial
RESOLUTION	203DPI
WARRANTY	1 Year Return to base

QL 320 Plus direct thermal mobile printer delivers print widths up to 2.9" (73.6 mm). In addition it offers the rugged construction, user-friendly options, and flexible QuickLink connectivity that have made Zebra's QL 320 and other QL series printers so popular.

1 year manufacturers warranty

ZEBRA QL420 MOBILE



WIDTH	103.9mm
SPEED	3" per second
INTERFACE	USB2 & Serial
RESOLUTION	203-300DPI
WARRANTY	1 Year Return to base

QL 420 Plus direct thermal mobile printer delivers print widths up to 4.09" (103.9 mm). In addition it offers the rugged construction, user-friendly options, and flexible QuickLink connectivity that have made Zebra's QL 420 and other QL series printers so popular.

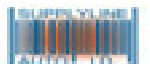
1 year manufacturers warranty

PRINT AND DELIVER



Designed with your mobile workforce in mind, Zebra's RW™ series printers provide convenient, robust and easy-to-use solutions for printing on the go.

Whatever your requirement, our extensive range of printers and accessories is sure to fit the bill; from two-inch and four-inch IP54 rated printers through to multi-bay chargers, in-car cradles and carrying devices, we've got it covered.



THE RW SERIES FROM ZEBRA

To find out more, scan the barcode on the right, or see the range at www.supplylineid.com
Telephone 01403 865 111
E-mail info@supplylineid.com





ABOUT DATAMAX ONEIL:

Datamax-O'Neil At-a-Glance:

- Global provider of stationary and portable label and receipt printing solutions
- Part of Dover's Printing & Identification Segment which generates more than \$1 billion in business
- Nearly 400 employees worldwide
- More than 200,000 end-users
- Well over 1 million printers manufactured
- 50+ years of experience
- Headquarters in Orlando, FL
- Global sales and technical support operations with offices around the world



DATAMAX ANDES 3 MOBILE



WIDTH	72mm
SPEED	3" Per Second
INTERFACE	802.1,Bluetooth, IrDA
RESOLUTION	203DPI
WARRANTY	1 Year Return to base

Andes 3 printer was designed for the rough and tumble environment of mobile field service applications. Rugged, lightweight and easy to use, the Andes 3 is the perfect choice for companies who need a durable printer at an affordable price.

NEW!

1 year manufacturers warranty

DATAMAX APEX MOBILE



WIDTH	48-104mm
SPEED	2" Per Second
INTERFACE	802.1,Bluetooth, IrDA
RESOLUTION	203DPI
WARRANTY	1 Year Return to base

Apex 2,3,4 are a light weight and compact printer that prints a crisp, clean receipt, proof of delivery, ticket or invoice of up to 4.37" at an affordable price to keep within today's tight budgets.

1 year manufacturers warranty

DATAMAX RL4 MOBILE



WIDTH	105mm
SPEED	4" Per Second
INTERFACE	802.1,Bluetooth, IrDA
RESOLUTION	203DPI
WARRANTY	2 Year Return to base

RL4 is a durable 4-inch (102mm) direct thermal printer with a rugged design and reliable performance that will continue to operate long after other printers have failed.

NEW!

1 year manufacturers warranty



INTERMEC PB3 MOBILE



WIDTH	72mm
SPEED	2" Per Second
INTERFACE	Serial
RESOLUTION	203DPI
WARRANTY	1 Year Return to base

Comfortable enough to wear all day, the lightweight and compact Intermec PB2/PB3 two- and three-inch commercial receipt printers meet the needs of the mobile workforce in DSD/route accounting, retail queue busting and field service applications. Long-lasting, field replaceable batteries and weather-resistant construction ensure the PB2/PB3 delivers dependable, all-day service, whenever and wherever required.

1 year manufacturers warranty

INTERMEC PB21 MOBILE



WIDTH	101mm
SPEED	4" per second
INTERFACE	USB & Serial
RESOLUTION	203DPI
WARRANTY	1 Year Return to base

PB21 delivers a clear advantage for workers on-the-go who need to produce invoices, delivery receipts, service estimates, mobile point-of-sale receipts, inventory management schedules and sales orders.

1 year manufacturers warranty

INTERMEC PB51 MOBILE



WIDTH	84mm
SPEED	4" per second
INTERFACE	USB & Serial
RESOLUTION	203DPI
WARRANTY	1 Year Return to base

PB51 delivers a clear advantage for workers on-the-go who need to produce invoices, delivery receipts, service estimates, mobile point-of-sale receipts, inventory management schedules and sales orders.

1 year manufacturers warranty

INTERMEC PW50 Workboard



WIDTH	104-105.7mm
SPEED	4-8" per second
INTERFACE	RS232 / DEX / UCS
RESOLUTION	203DPI
WARRANTY	1 Year Return to base

PW50 four-inch mobile workboard printer provides a convenient, integrated solution for DSD and field service applications. It has integrated DEX communications, fast print speed, Bluetooth connectivity, and optional integrated smart card and magnetic stripe readers.

1 year manufacturers warranty



THE ZXP SERIES 3™ PRINTERS FROM ZEBRA

REDEFINING VALUE

Changing the face of **card printing**.

Whether printing membership cards or ski passes, identity cards or gift cards, the ZXP Series 3 printers provide an ideal low-cost, easy-to-use solution. With high print quality, fast print speeds and optional smart-encoding capabilities, these printers really are the definition of value for money.

ZEBRA® ZXP SERIES 3 PRINTERS

To find out more, scan the bar code on the right, or see the range at www.supplylineid.com

Telephone **01403 865 111**

E-mail info@supplylineid.com





ZEBRA ZXP SERIES 8 CARD PRINTER



WIDTH	Full
SPEED	20 Seconds Per Card
INTERFACE	USB
RESOLUTION	Mono or YMCKO
WARRANTY	2 Year Return to base

ZXP Series 8 retransfer card printer line and ZMotif software platform, create on-demand plastic cards with picture-perfect image quality that meets your brand and quality requirements. To achieve this superior image quality, the printer uses image processing algorithms based on Zebra's photo printer technology.

2 year manufacturers warranty

ZEBRA P100i CARD PRINTER



WIDTH	Full
SPEED	6-35 Seconds Per Card
INTERFACE	USB
RESOLUTION	Mono or YMCKO
WARRANTY	2 Year Return to base

Zebra's single-sided, single-feed P100i printer produces full-colour or monochrome cards in moments. With the convenience of an integrated storage bay for 100 cards and a cleaning roll, you can quickly create many types of cards on demand.

2 year manufacturers warranty

ZEBRA P110i CARD PRINTER



WIDTH	Full
SPEED	30 Seconds Per Card
INTERFACE	USB
RESOLUTION	Mono or YMCKO
WARRANTY	2 Year Return to base

P110i is Zebra's most affordable colour card printer. The sleek design uses high-strength plastics and advanced electronics for reduced size and weight and outstanding performance, all at a great price. The Load-N-Go ribbon cartridge with i Series auto ribbon detection and integrated card cleaning roller are great features.

2 year manufacturers warranty

ZEBRA P110M CARD PRINTER



WIDTH	Full
SPEED	7 Seconds Per Card mono
INTERFACE	USB
RESOLUTION	Mono or YMCKO
WARRANTY	2 Year Return to base

P110m is Zebra's most affordable monochrome card printer. The sleek design uses high-strength plastics and advanced electronics for reduced size and weight and outstanding performance, all at a great price.

2 year manufacturers warranty



ZEBRA P120i CARD PRINTER



WIDTH	Full
SPEED	40 Seconds Per Card
INTERFACE	USB2 & Serial
RESOLUTION	Mono or YMCKO
WARRANTY	2 Year Return to base

P120i makes dual-sided card printing more affordable than ever. Use the P120i to enhance security with clearly identifiable photo IDs or access control cards. Or, build customer loyalty with great-looking membership cards or gift cards.

2 year manufacturers warranty

ZEBRA P330M CARD PRINTER



WIDTH	Full
SPEED	25 Seconds Per Card
INTERFACE	USB
RESOLUTION	Mono or YMCKO
WARRANTY	2 Year Return to base

P330M setting new standards, this single-sided, monochrome card printer is loaded with user-friendly features and dynamic options, which make it the most powerful and flexible printer in its class.

2 year manufacturers warranty

ZEBRA ZXP SERIES 3 CARD PRINTER



WIDTH	Full
SPEED	22 Seconds Per Card
INTERFACE	USB
RESOLUTION	Mono or YMCKO
WARRANTY	2 Year Return to base

ZXP Series 3 direct-to-card printer is the best-in-class choice. Utilizing ZRaster host-based image processing technology and True Colours ix Series high-performance ribbons, the ZXP Series 3 achieves fast print speeds and high image quality.

2 year manufacturers warranty

ZEBRA GENUINE SUPPLIES:

Card Printer Supplies

Selecting supplies for your Zebra card printer is a key factor affecting printing reliability, performance, consistency, and overall maintenance costs. To get the most from your Zebra card printer, choose genuine Zebra supplies designed specifically for Zebra card printers. Whether you need standard supplies or customized products with enhanced security features, we have the product for all your business needs and applications.

Insist on the best for your Zebra card printer investment. Choose genuine Zebra supplies.

Ring Supplyline now on 01403 865 111 for a quote.



THE QUICKEST WAY TO IMPROVE YOUR IMAGE



It only takes a moment to start looking good to your customers. Our super-fast, photo-quality ZXP Series 8™ card printers give you fantastic results in seconds. Whether you're printing loyalty cards, ID cards or any other type of card, you'll get fast, edge-to-edge, full-colour printing on both sides.

And these printers take the rough just as well as the smooth – giving you a great finish even on smart cards or recycled cards. So, for the best-looking results, whatever the surface, look no further than Zebra.

THE NEW ZXP SERIES 8 FROM ZEBRA

For more information, visit

www.supplylineid.com

Telephone **01403 865 111**

E-mail info@supplylineid.com



THE NEW WRISTBAND PRINTING SOLUTION

GOOD FUN, GOOD FOR BUSINESS

If you're looking for an economical wristband solution that offers you the flexibility to customise, the fun starts here. Brightly coloured, glossy and durable, these wristbands aren't just fun, they're practical too – they speed up admissions and eradicate ticket fraud. What's more, bar codes enable cashless transactions and gather valuable data to improve the customer experience.

And if what you're planning involves water, Z-Band Splash is waterproof, so the fun won't stop no matter how wet they get. Designed for use with a range of Zebra printers including the HC100™ and desktop bar code printers, you can print your wristbands in an instant and have fun on demand.

ZEBRA® Z-BAND® FUN AND Z-BAND SPLASH WRISTBANDS

SUPPLYLINE AUTO ID LTD
01403 865 111
www.supplylineid.com
info@supplylineid.com



©2011 ZIH Corp. All product names and numbers are Zebra trademarks, and Zebra, representation of Zebra Head and Z-Band are registered trademarks of ZIH Corp. All rights reserved. All other trademarks are the property of their respective owners.

HEALTHCARE
WRISTBAND &
SCANNERS





HEALTHCARE
WRISTBAND &
SCANNERS



HONEYWELL XENON 1900H / 1902H

DATALOGIC GRYPHON 4100/4400HC

NEW!

Honeywell

Featuring a new decoding architecture and customer sensor that is optimized for barcode scanning, Xenon 1900h excels at scanning the wide variety of barcodes found in healthcare, including high density 1D and 2D barcodes.

Choice of cabled scanners and Bluetooth Wireless.



**DISINFECTANT
READY**

NEW!

DATALOGIC

Datalogics Scannings Gryphon HC product series is specifically developed for healthcare application with Disinfectant-Ready enclosures treated with antimicrobial additives designed to withstand daily cleaning with disinfectant solutions.

Choice of cabled scanners and Bluetooth Wireless.



**DISINFECTANT
READY**



Terminals & Wireless Scanning Solutions

www.supplylineid.com

TERMINALS
& WIRELESS
SCANNING



TRANSPORTATION



- Product Movement
- Product Identification
- Track & Trace
- Signature Capture

WAREHOUSING



- Good In & Out
- Stock Control
- Traceability
- Product Movements

Terminals & Wireless Scanning Solutions



DATALOGIC

Honeywell

Intermec



MOTOROLA

www.supplylineid.com



TERMINALS
& WIRELESS
SCANNING

HEALTHCARE



- Patient I.D.
- Patient Safety
- Disinfectant-Ready
- Patient Records

RETAIL IN-STORE



- Stock Replenishment
- Pricing & Marking
- POS & Ordering Points
- Product Information



DATALOGIC MEMOR



IP64



TYPE	Imager
MEMORY	128MB RAM / 256MB ROM
SYMBOLOGIES	1D & 2D BARCODES
SYSTEM	Windows Mobile or CE 6.5
WARRANTY	1 Year Return to base

Memor™ captures tomorrow's barcodes today including GS1 Databar. A 2D imager enables a wide range of Linear, Stacked, 2D, and direct part marked bar codes. Or a Laser scanner offers Datalogic's patented Green Spot good read feedback for error proof reads of linear codes.

1 year manufacturers warranty

DATALOGIC ELF



IP64



TYPE	Laser or Imager
MEMORY	256MB RAM / 256MB ROM
SYMBOLOGIES	1D & 2D BARCODES
SYSTEM	Windows Mobile or CE 6.5
WARRANTY	1 Year Return to base

Elf PDA provides four wireless technologies in the same form factor: Bluetooth EDR for fast data transfer, 802.11 a/b/g with Cisco Certified security, UMTS HSDPA for real-time communication outside the enterprise Assisted GPS (A-GPS) with Skyhook's Core Engine hybrid positioning system for location based applications.

1 year manufacturers warranty

DATALOGIC SKORPIO



IP64



TYPE	Laser
MEMORY	128MB RAM / 512MB ROM
SYMBOLOGIES	1D BARCODES
SYSTEM	Windows Mobile or CE 5.0
WARRANTY	1 Year Return to base

Skorpio™ is a rugged mobile computer particularly suitable for mobile commerce solutions in the retail environment both on store shelves and in the stock room. Thanks to one of the best ergonomics ever seen on the market, Skorpio™ reduces operator fatigue with no compromise in terms of reliability and robustness, resisting harsh environments, multiple drops, strong shocks and repetitive tumbles.

1 year manufacturers warranty

DATALOGIC SKORPIO GUN



IP64



TYPE	Laser
MEMORY	128MB RAM / 512MB ROM
SYMBOLOGIES	1D BARCODES
SYSTEM	Windows Mobile or CE 5.0
WARRANTY	1 Year Return to base

Skorpio™ large high visibility color graphic display with touch screen helps users work more efficiently, while the practical 38-key "alpha & numeric" keypad and the simplified 28-key numeric keypad allow data, codes and descriptions to be input very quickly. It offers a choice between the standard Windows Mobile 6.1 and Windows CE 5.0 operating systems.

1 year manufacturers warranty



DATALOGIC KYMAN



IP64



TYPE	Laser
MEMORY	256MB RAM / 256MB ROM
SYMBOLOGIES	1D BARCODES
SYSTEM	Windows Mobile or CE 6.0
WARRANTY	1 Year Return to base

Kyman™ offers a wide range of Data Capture options including bar code and Voice Recognition. Standard laser, high performance laser and extra long range laser options provide data capture from near contact to several metres away. A vast variety of symbologies enable Kyman™ to meet every market and application objective.

1 year manufacturers warranty

DATALOGIC KYMAN GUN



IP64



TYPE	Laser
MEMORY	256MB RAM / 256MB ROM
SYMBOLOGIES	1D BARCODES
SYSTEM	Windows Mobile or CE 6.0
WARRANTY	1 Year Return to base

Kyman™ is available in hand-held and pistol grip models. Its detachable handle provides maximum flexibility switch between hand-held and pistol grip operations, without affecting Kyman's™ intrinsic robustness.

1 year manufacturers warranty

DATALOGIC FALCON X3



IP64



TYPE	Laser or Imager
MEMORY	256MB RAM / 256MB ROM
SYMBOLOGIES	1D & 2D BARCODES
SYSTEM	Windows Mobile or CE 6.0
WARRANTY	1 Year Return to base

Falcon with a high performance laser scanner with Green Spot, an auto ranging laser (XLR) scanner, or a 2D imager with Green Spot combined with a 3 Mega pixel colour camera.

NEW!

1 year manufacturers warranty

DATALOGIC FALCON X3 GUN



IP64



TYPE	Laser or Image
MEMORY	256MB RAM / 256MB ROM
SYMBOLOGIES	1D & 2D BARCODES
SYSTEM	Windows Mobile or CE 6.0
WARRANTY	1 Year Return to base

Ergonomic hand held and pistol grip form factors balance a 3.5 inch display, full keyboards and a one piece 5,000 mAh battery. Functional rubberized plastic enclosures survive daily abuse and trauma from drops to concrete and exposure to water and dust.

NEW!

1 year manufacturers warranty

TERMINALS
& WIRELESS
SCANNING

Honeywell

HONEYWELL DOLPHIN 6100

Honeywell

IP54



TYPE	Imager
MEMORY	128MB RAM / 128MB ROM
SYMBOLOLOGIES	1D & 2D BARCODES
SYSTEM	Windows CE 5.0
WARRANTY	1 Year Return to base

Dolphin® 6100 is a stylish and reliable mobile computer that provides advanced data collection and real-time wireless communication for in-premise applications including price lookup/audits, inventory management, customer assistance, and merchandising. This pocket-sized device provides mobile workers with the tools needed to streamline tasks, improve productivity, and maximize investment protection.

1 year manufacturers warranty

HONEYWELL DOLPHIN 6500

Honeywell

IP54



TYPE	Imager
MEMORY	128MB RAM / 128MB ROM
SYMBOLOLOGIES	1D & 2D BARCODES
SYSTEM	Windows CE 5.0
WARRANTY	1 Year Return to base

Dolphin® 6500 is a lightweight and versatile mobile computer that provides advanced data collection and real-time wireless communication for in-premise applications in retail, grocery and light-industrial supply chain environments. Multiple keypad options—the 28-key numeric and the 52-key alphanumeric—allow the delivery to be tailored to meet application requirements, as well as user preference.

1 year manufacturers warranty

HONEYWELL DOLPHIN 7600

Honeywell

IP54



TYPE	Imager
MEMORY	128MB RAM / 128MB ROM
SYMBOLOLOGIES	1D & 2D BARCODES
SYSTEM	Windows Mobile & CE 5.0
WARRANTY	1 Year Return to base

Dolphin® 7600 mobile computer is now available with GSM wireless technology and built-in GPS hardware. Small, lightweight and built for the worker who is constantly on the move, the Dolphin 7600 features the data collection and communication capabilities that keep businesses connected to their employees, their customers and their supply chain - empowering them to work smarter.

1 year manufacturers warranty

HONEYWELL DOLPHIN 9700

Honeywell

IP64



TYPE	Imager
MEMORY	256MB RAM / 1GB ROM
SYMBOLOLOGIES	1D & 2D BARCODES
SYSTEM	Windows Mobile 6.5
WARRANTY	1 Year Return to base

Dolphin® 9700 is a rugged digital assistant equipped with multi-functional data collection and communications capabilities in one reliable, easy-to-use device. The Dolphin 9700 allows companies specializing in parcel delivery, route accounting, field services, and healthcare point-of-care applications to better serve their customers.

1 year manufacturers warranty

Honeywell

HONEYWELL DOLPHIN 9900

Honeywell

IP64



TYPE	Imager
MEMORY	256MB RAM / 1GB ROM
SYMBOLOLOGIES	1D & 2D BARCODES
SYSTEM	Windows Mobile 6.1
WARRANTY	2 Year Return to base

Dolphin® 9900 Mobile Computer delivers a complete set of productivity-enhancing capabilities in a solution built for maximum reliability and ease of use empowering you and your frontline employees to work smarter.

1 year manufacturers warranty

HONEYWELL SCANPAL 2

Honeywell



TYPE	Laser
MEMORY	1MB SRAM
SYMBOLOLOGIES	1D BARCODES
SYSTEM	Windows Generator
WARRANTY	1 Year Return to base

ScanPal2 is a portable data collection terminal designed for daily use in applications such as inventory/stock control, shipping/receiving, price checking and more. Over 100 hours of operation can be achieved using two standard AAA batteries. Its compact design provides single-handed operation, ease-of-use, and durability.

1 year manufacturers warranty

HONEYWELL DOLPHIN 9951

Honeywell

IP64



TYPE	Imager
MEMORY	256MB RAM / 1GB ROM
SYMBOLOLOGIES	1D & 2D BARCODES
SYSTEM	Windows Mobile 6.1
WARRANTY	2 Year Return to base

Dolphin 9951 integrates Long-Range Bar Code Scanning, allowing workers to comfortably scan distant bar codes (up to 30 feet) from the ground or forklift, resulting in increased worker productivity and safety.

1 year manufacturers warranty

HONEYWELL DOLPHIN 9700

Honeywell

IP64



TYPE	Imager
MEMORY	256MB RAM / 1GB ROM
SYMBOLOLOGIES	1D & 2D BARCODES
SYSTEM	Windows Mobile 6.5
WARRANTY	1 Year Return to base

Dolphin® 9700 is a rugged digital assistant equipped with multi-functional data collection and communications capabilities in one reliable, easy-to-use device. The Dolphin 9700 allows companies specializing in parcel delivery, route accounting, field services, and healthcare point-of-care applications to better serve their customers.

1 year manufacturers warranty



INTERMEC CK3



IP54



TYPE	Imager
MEMORY	256MB RAM / 512MB ROM
SYMBOLOGIES	1D & 2D BARCODES
SYSTEM	Windows Mobile 6.1
WARRANTY	1 Year Return to base

CK3 embeds Intermec's latest generation of imaging technology for outstanding scanning productivity and compliance to the most recent industry standards. Intermec imaging technology delivers fast 1D and 2D barcode scanning, unmatched performance on poor quality and damaged barcodes, and unmatched flexibility in scanning range.

1 year manufacturers warranty

INTERMEC CS40



IP54



TYPE	Imager
MEMORY	256MB RAM / 512MB ROM
SYMBOLOGIES	1D & 2D BARCODES
SYSTEM	Windows Mobile 6.5
WARRANTY	1 Year Return to base

CS40 is designed specifically for mobile field professionals who need productivity and reliability beyond a smart phone. The CS40 is Intermec's smallest rugged mobile computer. It combines ruggedness, advanced 3.75G voice and data communications.

1 year manufacturers warranty

INTERMEC CN50



IP54



TYPE	Imager
MEMORY	256MB RAM / 512MB ROM
SYMBOLOGIES	1D & 2D BARCODES
SYSTEM	Windows Mobile 6.1
WARRANTY	1 Year Return to base

The Intermec CN50 is the only 3.75G wireless mobile computer that combines a small and lightweight form factor with a rugged design to deliver the most advanced, high performance voice and data communication solution specifically designed for the highly mobile field worker.

With the class leading capabilities of the CN50 in their mobile workers' hands, enterprises can improve their business processes, expand their service offerings and reduce the cost and complexity of a field mobility solution.

1 year manufacturers warranty

INTERMEC CV30 VEHICLE MOUNT



VEHICLE MOUNT

IP66



TYPE	Imager
MEMORY	128MB RAM / 128MB ROM
SYMBOLOGIES	1D & 2D BARCODES
SYSTEM	Windows Mobile & CE 5.0
WARRANTY	1 Year Return to base

Best-in-class flexibility offers the most versatile set of features and options for fixed mount vehicle and stationary applications. Smallest full-screen footprint.

Improves forklift safety by increasing driver visibility.

Ideal solution for cross-application deployment.

Versatile ADC Control Center that enables real-time decision-making through integration and management of multiple types of data inputs.

1 year manufacturers warranty



INTERMEC CN3



IP54



TYPE	Imager
MEMORY	128MB RAM / 256MB ROM
SYMBOLOLOGIES	1D & 2D BARCODES
SYSTEM	Windows Mobile 6.1
WARRANTY	1 Year Return to base

With standard WiFi, Bluetooth and choice of integrated, network independent GPS receiver and WAN voice and data services (including 3G EV-DO or EDGE), the CN3 enables companies to stay connected with their mobile workforce in real time.

1 year manufacturers warranty

INTERMEC CN4



IP65



TYPE	Imager
MEMORY	128MB RAM / 256MB ROM
SYMBOLOLOGIES	1D & 2D BARCODES
SYSTEM	Windows Mobile 6.1
WARRANTY	1 Year Return to Base

CN4 Series are not only the most rugged devices in their class with IP65 sealing and a 1.8m (6 ft) drop spec, but also have field-proven, built-in software support for a broad range of compatible peripherals designed to serve a broad range of applications in the transportation, field service and direct-store-delivery environments.

1 year manufacturers warranty

INTERMEC CK70



IP67



TYPE	Imager
MEMORY	512MB RAM / 1GB FLASH
SYMBOLOLOGIES	1D & 2D BARCODES
SYSTEM	Windows Mobile 6.5
WARRANTY	1 Year Return to base

Meets your challenges head on with next generation features that focus on increasing efficiency and delivering unparalleled reliability for track & trace and proof of delivery applications, even in the most extreme conditions. Extend the use of the CK70 into hazardous locations with the non-incendive certified (Div. 2) CK70. The design of the CK70 is specifically optimized for the courier express, parcel (CEP) and postal environments. In addition to being 12% smaller and lighter than other form factors in its ultra-rugged class, the CK70 supports workers in this fast moving, mobile environment with an application specific keyboard layout that is both slender and back-lit to allow for effortless, all day single-handed use.

1 year manufacturers warranty

INTERMEC CN70e



IP67



TYPE	Imager
MEMORY	512MB RAM / 1GB FLASH
SYMBOLOLOGIES	1D & 2D BARCODES
SYSTEM	Windows Mobile 6.5
WARRANTY	1 Year Return to base

CN70e offers power-packed computing and comes with a large keypad design making it ideal for delivery environments where workers may be wearing gloves or have more data input intensive applications. Extend the use of the CN70 and CN70e into hazardous locations with the nonincendive certified (Div. 2) CN70 and CN70e.

1 year manufacturers warranty



ABOUT MOTOROLA / SYMBOL: MOBILE

Handheld Computers

Single-device simplicity designed for retail, public agencies, logistics and mobile fleets results in handheld technology that extends organisational knowledge into the field, instantly and accurately.



Rugged Notebooks

Receive timely information and handle the demands of the mission-critical world with ultra-robust, feature-rich, ruggedized notebooks.

Wearable Solutions

Our comfortable yet durable devices are built with the latest data capture and voice technology, keeping workers' hands and eyes on the tasks at hand.

Vehicle-mounted Computers

Real-time, reliable data that goes where you go—at the scene, on the street or in the warehouse.

Mobile Computer Accessories

Batteries and Battery Accessories / Cables / Carry Accessories
Chargers / Cradles / Headsets / Keyboards / Mounting Hardware
Power Supplies / Protection Accessories / Stylus.

TERMINALS
& WIRELESS
SCANNING

MOTOROLA MC3100



IP54

TYPE	Laser or Imager
MEMORY	128MB RAM / 256MB FLASH
SYMBOLOGIES	1D & 2D BARCODES
SYSTEM	Windows Mobile & CE 6.0
WARRANTY	1 Year Return to base

MC3100 Series brings cost-effective mobile computing and user comfort to key-based applications within the four walls. The rugged and ergonomic MC3100 Rugged Mobile Computer offers advanced computing power and data capture capabilities, enhanced security and enterprise class motion sensing capabilities.

1 year manufacturers warranty

MOTOROLA MC9190G



IP54

TYPE	Laser or Imager
MEMORY	128MB RAM / 256MB FLASH
SYMBOLOGIES	1D & 2D BARCODES
SYSTEM	Windows Mobile & CE 6.0
WARRANTY	1 Year Return to base

The Motorola MC9190-G mobile computer is more rugged, more powerful, has a higher resolution display, better scanning performance and more scanning options than its predecessors. The next evolution in the highly successful MC9000 Series gives your workers the ability to process information and take action quickly and accurately, even in the harshest of environments.

NEW!

1 year manufacturers warranty

MOTOROLA ES400



TYPE	Imager
MEMORY	256MB RAM / 1GB FLASH
SYMBOLOGIES	1D & 2D BARCODES
SYSTEM	Windows Mobile 6.5
WARRANTY	1 Year Return to base

ES400 is a cutting-edge mobile Enterprise Digital Assistant (EDA) that transforms mobile managers and task workers from informed to truly empowered by giving them the tools and access to critical enterprise-class applications they need to complete any job, anywhere.

NEW!

1 year manufacturers warranty



MOTOROLA RS507



TYPE	Imager
CONNECTION	Bluetooth
SYMBOLOGIES	1D & 2D BARCODES
RESOLUTION	5mil
WARRANTY	1 Year Return to base

Advanced ergonomics and Bluetooth® cordless freedom deliver unparalleled freedom of movement and user comfort – regardless of hand size or hand preference. Best-in-class scanning performance includes stunning laser-like performance on both 1D and 2D bar codes and omnidirectional scanning.

1 year manufacturers warranty

MOTOROLA VC6096



IP64

TYPE	Vehicle Computer
MEMORY	128MD RAM / 256MB FLASH
SYMBOLOGIES	Plug-In
SYSTEM	Windows CE 5.0 PRO
WARRANTY	1 Year Return to Base

VC6096 In-Vehicle mobile computer is an all-in-one in-cab computer designed to help transportation and logistics providers achieve cost-effective compliance, maximize driver productivity, improve safety and vehicle utilization, reduce costs and improve customer service.

1 year manufacturers warranty

MOTOROLA WT4090



IP54

TYPE	Voice over Wireless
MEMORY	128MD RAM / 128MB FLASH
SYMBOLOGIES	Plug-In
SYSTEM	Windows CE 5.0 PRO
WARRANTY	1 Year Return to base

WT4090 VOW is a simple, rugged wearable computer for voice-directed task workers, enabling high-performance hands-free applications to improve productivity and reduce errors in the warehouse. The wireless 802.11a/b/g voice-only wearable terminal offers the same high-power processing and superior voice functionality as the fully featured Motorola WT4090.

1 year manufacturers warranty

MOTOROLA MC65



IP64

TYPE	Imager
MEMORY	256MB RAM / 1GB FLASH
SYMBOLOGIES	1D & 2D BARCODES
SYSTEM	Windows Mobile 6.5
WARRANTY	1 Year Return to base

Redefine productivity with the MC65 in hand, one of the toughest and most flexible EDAs on the market. Desktop-like application performance and our most robust scanning, camera and GPS technologies plus a customizable user interface make data capture and information access easier than ever.

1 year manufacturers warranty

TERMINALS
& WIRELESS
SCANNING



MOTOROLA MC17



TYPE	Laser
MEMORY	64MB RAM / 64MB FLASH
SYMBOLOGIES	1D BARCODES
SYSTEM	Windows CE
WARRANTY	1 Year Return to base

This advanced handheld retail mobile computer acts as a consumer shopping self-scanning terminal that lets your shoppers speed up the checkout process, locate items, check pricing, find complementary products and take advantage of personalised promotions and recommendations. This new level of self-service and shopping convenience results in higher sales and happier customers.

1 year manufacturers warranty

MOTOROLA MC75A



IP54

TYPE	Laser or Imager
MEMORY	256MB RAM / 1GB FLASH
SYMBOLOGIES	1D & 2D BARCODES
SYSTEM	Windows Mobile 6.5
WARRANTY	1 Year Return to Base

The 3.5G MC75A, one of the world's premium EDAs, offers more features and functionality, in a field-proven rugged form factor, than any other device in its class. The turbocharged MC75A addresses business critical mobility needs by maximizing processing power, rugged design, application flexibility, data capture capabilities, connectivity options, security and manageability – all in one device.

1 year manufacturers warranty

MOTOROLA MC55AO-HC



IP64

TYPE	Laser or Imager
MEMORY	256MB RAM / 1GB FLASH
SYMBOLOGIES	1D & 2D BARCODES
SYSTEM	Windows Mobile 6.5
WARRANTY	1 Year Return to base

MC55AO-HC is designed for life inside the hospital, able to endure everyday drops and bumps as well as disinfecting after each patient. And robust wireless application performance and wireless connectivity options allow healthcare givers to access patient records, accurately administer medication and monitor patient vital signs

1 year manufacturers warranty

MOTOROLA MC55AO



IP64

TYPE	Laser or Imager
MEMORY	256MB RAM / 1GB FLASH
SYMBOLOGIES	1D & 2D BARCODES
SYSTEM	Windows Mobile 6.5
WARRANTY	1 Year Return to base

MC55AO rugged enterprise mobile computer lets your workers access business applications, scan bar codes, snap a photo, view a video and place a private or push-to-talk call to virtually anyone in your facility - all with a single device. The sleek lightweight design is not only pocketable, it is at home in front of customers and patients.

1 year manufacturers warranty

OPTICON

OPTICON PX35

OPTICON



TYPE	Imager
MEMORY	2MB RAM / 4MB FLASH
SYMBOLOGIES	1D & 2D BARCODES
SYSTEM	Proprietary
WARRANTY	2 Year Return to base

PX35 is a pocket-sized data collector with a Bluetooth interface and a 2D scan engine with auto-focus. Scanned data can immediately be sent to other Bluetooth devices using either HID or SPP protocols. An integrated real-time clock adds a date and time stamp to every identified barcode.

NEW!

2 year manufacturers warranty

OPTICON OPN2002

OPTICON

IP42



TYPE	Laser
MEMORY	1 MB RAM & 1MB FLASH
SYMBOLOGIES	1D BARCODES
SYSTEM	Proprietary
WARRANTY	2 Year Return to base

OPN-2002 is a Bluetooth-equipped memory scanner, combining convenient barcode data collection with flexible communication options. Collected barcodes can be transmitted by wireless interface (or via USB cable) to other Bluetooth enabled devices, including: iPhones and iPads, Android Tablets, Windows Mobile PDAs etc.

2 year manufacturers warranty

OPTICON OPL9712 Speedgen

OPTICON



IP54

TYPE	Imager
MEMORY	512kb RAM & 1MB FLASH
SYMBOLOGIES	1D BARCODES
SYSTEM	Proprietary
WARRANTY	2 Year Return to base

The OPL9712 is sealed up to IP 54 standards and collects your information at an impressive 100 scans per second. The on-board memory enables storage of data and is large enough to accommodate an entire day of scanning.

Easy data entry
The OPL9712 is equipped with an alphanumeric keypad for easy data entry, one scan button and two extra function keys. The LCD display allows easy readability of as many as 10 lines of information to easily navigate through the collected data.

2 year manufacturers warranty

OPTICON OPN2001

OPTICON

IP42



TYPE	Laser
MEMORY	512kb RAM & 1MB FLASH
SYMBOLOGIES	1D BARCODES
SYSTEM	Proprietary
WARRANTY	2 Year Return to base

OPN2001, part of the OPN2000 series is a pocket memory scanner, enabling convenient barcode data collection. This device enables storage and removal of barcode scans. The collected barcodes can be transmitted by a USB cable.

2 year manufacturers warranty

OPTICON

OPTICON H21 1D

OPTICON

IP64



TYPE	Laser
MEMORY	256MB RAM / 256MB FLASH
SYMBOLOGIES	1D BARCODES
SYSTEM	Windows Mobile 6.5
WARRANTY	2 Year Return to base

Apart from Windows Mobile 6.5, the H21 is standard equipped with assisted GPS, 3G and 3.5G communication, Bluetooth and WiFi. The barcode reader provides the versatility to read all standard 1D barcode symbologies.

NEW!

2 year manufacturers warranty

OPTICON H21 2D

OPTICON

IP64



TYPE	Imager
MEMORY	256MB RAM / 256MB FLASH
SYMBOLOGIES	1D & 2D BARCODES
SYSTEM	Windows Mobile 6.5
WARRANTY	2 Year Return to base

This new generation device has an integrated 3.2 megapixel colour camera with auto-focus and flash light. Use the 2.8" touch screen for signature writing and capture all information on the H21 2D. The user accessible slot enables the user to expand the memory by microSD and HC.

NEW!

2 year manufacturers warranty

OPTICON H22 1D

OPTICON

IP64



TYPE	Laser
MEMORY	256MB RAM / 512MB FLASH
SYMBOLOGIES	1D BARCODES
SYSTEM	Windows Mobile 6.5
WARRANTY	2 Year Return to base

This new generation device has an integrated 3.2 megapixel color camera with auto-focus and flash light. Use the 2.8" touch screen for signature writing and capture all information on the H22 1D. The user accessible slot enables the user to expand the memory by microSD and HC.

NEW!

2 year manufacturers warranty

OPTICON H22 2D

OPTICON

IP64



TYPE	Imager
MEMORY	256MB RAM / 512MB FLASH
SYMBOLOGIES	1D & 2D BARCODES
SYSTEM	Windows Mobile 6.5
WARRANTY	2 Year Return to base

This new generation device has an integrated 3.2 megapixel color camera with auto-focus and flash light. Use the 2.8" touch screen for signature writing and capture all information on the H22 2D. The user accessible slot enables the user to expand the memory by microSD and HC.

NEW!

2 year manufacturers warranty

OPTICON

OPTICON H15A 1D

OPTICON



IP54

TYPE	Laser
MEMORY	64MB RAM / 256MB FLASH
SYMBOLOLOGIES	1D BARCODES
SYSTEM	Windows CE 5.0
WARRANTY	2 Year Return to base

H15A Windows CE 5.0 terminal is equipped with a 1D barcode scanner for a fast and accurate scan. Bluetooth and the Cisco compatible WLAN interface enable seamless integration of barcode based data into your mobile business.

NEW!

2 year manufacturers warranty

OPTICON H15B 2D

OPTICON



IP54

TYPE	Imager
MEMORY	64MB RAM / 256MB FLASH
SYMBOLOLOGIES	1D & 2D BARCODES
SYSTEM	Windows CE 5.0
WARRANTY	2 Year Return to base

H15B is a ruggedized terminal equipped with a 2D scan engine with auto-focus, providing an accurate scan of both 1D and 2D barcodes. The optics feature self-adaptation of the lens to focus on varying distances. Bluetooth and the Cisco compatible WLAN interface enable seamless integration of barcode based data into your mobile business.

NEW!

2 year manufacturers warranty

OPTICON PHL8112

OPTICON



IP54

TYPE	Laser
MEMORY	128MB RAM / 128MB FLASH
SYMBOLOLOGIES	1D BARCODES
SYSTEM	Windows CE 5.0
WARRANTY	2 Year Return to base

PHL8112 is part of the PHL8000 series consisting of ruggedized PDA-like terminals, equipped with Windows CE 5.0. All terminals in this range have several wireless communication options. WLAN and Bluetooth are standard available on the PHL8000 series. Two models are also equipped with GPRS and EDGE. Additionally, the serial connector provides the option to use a communication cable.

2 year manufacturers warranty

OPTICON PHL7112

OPTICON



IP54

TYPE	Laser
MEMORY	64MB RAM / 128MB FLASH
SYMBOLOLOGIES	1D BARCODES
SYSTEM	Windows CE 5.0
WARRANTY	2 Year Return to base

PHL-7112 is a rugged portable terminal with built in barcode scanner. It is powered by Windows CE 5.0 and features a tough numeric keypad and 3.5" LCD display, housed in a durable, yet ergonomic case. As well as batch, Bluetooth and WiFi connectivity, the PHL-8112 also includes a Compact Flash I/O slot for additional flexibility.

2 year manufacturers warranty



ABOUT AXICON:

Axicon, a world leader in barcode verification, has achieved accreditation under the new Solution Provider Accreditation scheme from GS1 UK, the supply chain standards body. Additionally,

Axicon has launched its S Range of barcode verifiers, which have been designed to provide users with the highest levels of accuracy currently available by giving results averaged over more than 150 scans of a barcode at different points in the bar height - in less than a second.



TERMINALS
& WIRELESS
SCANNING

AXICON 6515 BARCODE VERIFIER



WIDTH	125mm
INTERFACE	USB or RS232 Serial
FEATURES	FREE SOFTWARE
WARRANTY	2 Year Return to base

The Axicon 6500 Series barcode verifier is aimed at verifying small to medium size linear barcodes, (max 125 mm), used in general distribution of retail products (EAN-13, EAN-8, UPC-A and UPC-E, GS1 Databar, GS1-128, ITF-14 (max 95% magnification). This easy to operate, plug and play system is perfect for product manufacturers, label printers, printers and packagers (cardboard, flexible, aluminium, etc), pre press studios. Thanks to its ideal combination of optical apertures and capture size, this verifier is the only one that can cater for all types of barcodes at most sizes.

2 year manufacturers warranty

AXICON 6015 BARCODE VERIFIER



WIDTH	69mm
INTERFACE	USB or RS232 Serial
FEATURES	FREE SOFTWARE
WARRANTY	2 Year Return to base

The Axicon 6000 Series barcode verifier is aimed at verifying small size linear barcodes, (max 68mm), used in general distribution of retail products (EAN-13, EAN-8, UPC-A and UPC-E, GS1 Databar), on pharmaceutical products (Code 39, Italian pharmacode, code-128, RSS, Laetus Pharmacode*). This easy to operate, plug and play system is perfect for product manufacturers, label printers, printers and packagers (cardboard, flexible, aluminium, etc), pre press studios.

2 year manufacturers warranty

AXICON 7015 BARCODE VERIFIER



WIDTH	195mm
INTERFACE	USB or RS232 Serial
FEATURES	FREE SOFTWARE
WARRANTY	2 Year Return to base

The Axicon 7000 Series barcode verifier is aimed at verifying large size linear barcodes, (up to 195 mm), used in general distribution of retail products (mainly GS1-128, ITF-14, pallet labels). This easy to operate, plug and play system is perfect for product manufacturers, thermal transfer label printing operations, printers and packagers (corrugated cardboard).

2 year manufacturers warranty



AXICON 6525s BARCODE VERIFIER



WIDTH	125mm
SCAN RATE	100 Scans Per Second
INTERFACE	USB
FEATURES	FREE SOFTWARE
WARRANTY	2 Year Return to base

The Axicon 6525 - S is designed for all barcodes where a 5, 6, 10 or 20mil aperture is mandatory (such as EAN8, EAN13, UPC-A, UPC-E, GS1-128 and ITF-14), up to 125mm width including quiet zones. For the user who needs to verify barcodes on both consumer unit (point of sale) products and also the smaller sized traded pack barcodes - typically those printed thermal or thermal transfer to labels).

NEW!

2 year manufacturers warranty

AXICON 7025s BARCODE VERIFIER



WIDTH	195mm
SCAN RATE	100 Scans Per Second
INTERFACE	USB
FEATURES	FREE SOFTWARE
WARRANTY	2 Year Return to base

The Axicon 7025-S is designed for all barcodes where an 8, 10 or 20mil aperture is mandatory (such as GS1-128 and ITF-14), up to 195mm width including quiet zones. Traded Pack level (Warehouse) barcodes whether being verified on cartons, labels, corrugated board, shrink wrap film etc plus all pallet labels and linear barcodes of a similar size.

NEW!

2 year manufacturers warranty

AXICON 12000 2D BARCODE VERIFIER



WIDTH	195mm
2D BARCODE TYPES	Data Matrix, GS1 Databar Code, QR Code, PDF
INTERFACE	USB
WARRANTY	2 Year Return to base

The Axicon 12000 - 2D verifier is aimed at verifying 2D bar codes such as Data Matrix, GS1 Databar codes, QR codes, PDF and micro PDF codes. This easy to operate, plug and play system (subject to size) is perfect for product manufacturers, label printers, printers and packagers (cardboard, flexible, aluminium, etc), pre press studios. ISO 15415 Print quality specifications. ISO 15426-2 Verifier conformance standard. The verifier is fully featured and includes all of the features necessary to meet the stringent 21 CFR part II requirements.

2 year manufacturers warranty

AXICON 6025s BARCODE VERIFIER



WIDTH	68mm
SCAN RATE	100 Scans Per Second
INTERFACE	USB
FEATURES	FREE SOFTWARE
WARRANTY	2 Year Return to base

The "S" range of Axicon verifiers have a "Continuous Scan" feature. Just place the verifier over the barcode (or slightly above or below the barcode), press the trigger and slide the verifier over the code - in less than a second you can have results averaged over a maximum of 100 scans of the code at different points in the bar height.

NEW!

2 year manufacturers warranty

TERMINALS & WIRELESS SCANNING



LABELS / TAGS & TICKETS

We have supplied MILLIONS of labels and because of the volumes we supply, our prices are amongst the best in the industry.

- Choose from over 2,000 label cutter sizes and shapes.
- Choose from over 80 tag cutters.
- Choose from over 100 different stock labels & tags.
- Choose from various material types from Paper to Synthetics.
- Fastest average turnaround in the industry.



SELF-ADHESIVE
LABELS AND
TAGS

PLAIN LABELS

Plain labels, any shape or size.
 PAPER: Thermal Transfer or Direct Thermal.
 SYNTHETIC: Polypropylene / Polyester / Silver PE / Vinyl.
 Permanent or Peelable Adhesive.
 No Order too Big or too Small.



PRINTED LABELS

Colour or Pre-Printed labels, any shape or size.
 FREE Design Service.
 Choose from 100s of existing plates.
 Generic range of labels off the shelf.
 Up to 7 Colours + Varnish.





LASER LABELS

Over 35 Sizes in Stock.
Butt cut or Die Cut.
All popular Avery sizes.
Colour types available.
Bespoke shapes and sizes.
Boxed in 100s or Bulk 500s.



TAGS & TICKETS

Over 80 Cutters to choose from.
Printed Back or Front or Plain.
All tags are Perforated in between
Chad tied holes.
Black Sensor Marks or Notches.
Specialist full weather tuff tags.



SELF-ADHESIVE
LABELS AND
TAGS

ASSET LABELS

3M Polyester + 100% Laminated.
Polypropylene + 100% Laminated.
Sequential Number or Barcode.
Anodised aluminium labels.
No Art & Design Charges.



PAT TEST LABELS



SUPPLYLINE - Fastest label Turnaround

www.barcodelabelsolutions.co.uk



SELF-ADHESIVE
LABELS AND
TAGS

FASTEST LABEL SUPPLIES FROM STOCK

SUPPLYLINE LABELS:

We offer a wide range of labels in any size on pages 75-77 to suit a variety of printer types:
We offer each of these sizes in different materials and adhesives as listed below:

- DIRECT THERMAL PAPER** (PERMANENT / PEELABLE / FREEZER PERM Adhesive)
- THERMAL TRANSFER PAPER** (PERMANENT / PEELABLE / FREEZER PERM Adhesive)
- POLYPROPYLENE SYNTHETIC** (PERM Adhesive)

**CALL OUR LABEL TEAM ON TEL: 01403 865 111 FOR LATEST PRICING or
EMAIL labels@supplylineid.com**



Supplyline offer this range of labels on a 4" Outside Diam Roll, these labels are on a 25mm core but can be made on either a 38mm Core or a 44mm Core on request, that will be made to order. We offer all of these sizes in either Thermal Transfer Paper (Matt or Gloss) Direct Thermal Paper and Polypropylene Synthetic.

STOCK LABEL SIZES / 4" OD

PART NO.	WIDTH (MM)	HEIGHT (MM)	ROLLS PER BOX	LABELS PER ROLL	LABELS PER BOX	WT/CASE (KG)
TT2011-4P	20	11	12	2780	33,360	2KG
TT3222-4P	32	22	12	1560	18,720	2KG
TT3225-4P	32	25	12	1380	16,560	2KG
TT3825-4P	38	25	12	1380	16,560	3KG
TT4030-4P	40	30	12	1180	14,160	3KG
TT4040-4P	40	40	12	900	10,800	3KG
TT5025-4P	50	25	12	1380	16,560	3KG
TT5176-4P	51	76	12	500	6,000	4KG
TT51102-4P	51	102	12	380	4,560	4KG
TT5252-4P	52	52	12	735	8,820	4KG
TT5719-4P	57	19	12	1780	21,360	4KG
TT5732-4P	57	32	12	1135	13,620	4KG
TT5751-4P	57	51	12	735	8,820	4KG
TT5776-4P	57	76	12	500	6,000	4KG
TT57102-4P	57	102	12	380	4,560	4KG
TT6030-4P	60	30	12	1180	14,160	4KG
TT6038-4P	60	38	12	960	11,520	4KG
TT6350-4P	63	50	12	735	8,820	4KG
TT7025-4P	70	25	12	1310	15,720	4KG
TT7050-4P	70	50	12	735	8,820	5KG
TT7626-4P	76	26	12	1310	15,720	5KG
TT7638-4P	76	38	12	960	11,520	5KG
TT7651-4P	76	51	12	735	8,820	6KG
TT76102-4P	76	102	12	377	4,524	6KG
TT10225-4P	102	25	12	1310	15,720	8KG
TT10238-4P	102	38	12	960	11,520	8KG
TT10264-4P	102	64	12	640	7,680	8KG
TT10276-4P	102	76	12	500	6,000	8KG
TT102102-4P	102	102	12	377	4,524	8KG
TT102127-4P	102	127	12	305	3,660	8KG
TT102152-4P	102	152	12	250	3,000	8KG

LABELS / TAGS & TICKETS

Supplyline offer this range of labels on a 5" Outside Diam Roll, these labels are on a 25mm core but can be made on either a 38mm Core or a 44mm Core on request, that will be made to order. We offer all of these sizes in either Thermal Transfer Paper (Matt or Gloss) Direct Thermal Paper and Polypropylene Synthetic.

STOCK LABEL SIZES / 5" OD

PART NO.	WIDTH (MM)	HEIGHT (MM)	ROLLS PER BOX	LABELS PER ROLL	LABELS PER BOX	WT/CASE (KG)
TT2011-5P	20	11	12	5,000	60,000	2KG
TT3222-5P	32	22	12	3,000	36,000	2KG
TT3225-5P	32	25	12	2,670	32,040	2KG
TT3825-5P	38	25	12	2,670	32,040	3KG
TT4030-5P	40	30	12	2,250	27,000	3KG
TT4040-5P	40	40	12	1,750	21,000	3KG
TT5025-5P	50	25	12	2,670	32,040	3KG
TT5176-5P	51	76	12	950	11,400	4KG
TT51102-5P	51	102	12	745	8,940	4KG
TT5252-5P	52	52	12	1,350	16,200	4KG
TT5719-5P	57	19	12	3,514	42,168	4KG
TT5732-5P	57	32	12	2,235	26,820	4KG
TT5751-5P	57	51	12	1,445	17,340	4KG
TT5776-5P	57	76	12	950	11,400	4KG
TT57102-5P	57	102	12	745	8,940	4KG
TT6030-5P	60	30	12	2,250	27,000	4KG
TT6038-5P	60	38	12	1,830	21,960	4KG
TT6350-5P	63	50	12	1,445	17,340	4KG
TT7025-5P	70	25	12	2,670	32,040	4KG
TT7050-5P	70	50	12	1,445	17,340	5KG
TT7626-5P	76	26	12	2,670	32,040	5KG
TT7638-5P	76	38	12	1,830	21,960	5KG
TT7651-5P	76	51	12	1,445	17,340	6KG
TT76102-5P	76	102	12	745	8,940	6KG
TT10225-5P	102	25	12	2,670	32,040	8KG
TT10238-5P	102	38	12	1,800	21,600	8KG
TT10264-5P	102	64	12	1,100	13,200	8KG
TT10276-5P	102	76	12	985	11,820	8KG
TT102102-5P	102	102	12	745	8,940	8KG
TT102127-5P	102	127	12	600	7,200	8KG
TT102152-5P	102	152	12	6,000	3,000	8KG

Supplyline offer this range of labels on a 8" Outside Diam Roll, these labels are on a 76mm core but can be made on either a 38mm Core or a 44mm Core on request, that will be made to order. We offer all of these sizes in either Thermal Transfer Paper (Matt or Gloss) Direct Thermal Paper and Polypropylene Synthetic.

STOCK LABEL SIZES / 8" OD

PART NO.	WIDTH (MM)	HEIGHT (MM)	ROLLS PER BOX	LABELS PER ROLL	LABELS PER BOX	WT/CASE (KG)
TT2532-8P	25	32	16	4,500	72,000	9KG
TT3825-8P	38	25	12	5,500	66,000	10KG
TT3838-8P	38	38	12	3,800	45,600	11KG
TT4030-8P	40	30	12	4,750	57,000	11KG
TT5226-8P	52	26	8	5,000	40,000	9KG
TT5238-8P	52	38	8	3,750	30,000	9KG
TT5252-8P	52	52	8	2,750	22,000	10KG
TT51127-8P	51	127	8	1,200	9,600	10KG
TT51140-8P	51	140	8	1,100	8,800	10KG
TT5732-8P	57	32	12	4,500	36,000	11KG
TT7032-8P	70	32	8	4,500	54,000	19KG
TT7651-8P	76	51	8	2,750	22,000	14KG
TT7676-8P	76	76	4	2,000	16,000	15KG
TT83140-8P	83	140	4	1,100	4,400	8KG
TT8925-8P	89	25	4	5,500	22,000	8KG
TT10252-8P	102	52	4	2,750	11,000	8KG
TT10264-8P	102	64	4	2,300	9,200	9KG
TT10274-8P	102	74	4	2,000	8,000	10KG
TT10276-8P	102	76	4	2,000	8,000	10KG
TT102102-8P	102	102	4	1,500	6,000	10KG
TT102148-8P	102	148	4	1,000	4,000	10KG
TT102152-8P	102	152	4	1,000	4,000	10KG
TT102200-8P	102	200	4	750	3,000	10KG
TT12764-8P	127	64	4	2,300	9,200	12KG
TT127102-8P	127	102	4	1,500	6,000	12KG
TT127152-8P	127	152	4	1,000	4,000	12KG
TT13825-8P	138	25	4	5,500	22,000	12KG
TT148102-8P	148	102	4	1,500	6,000	12KG
TT148210-8P	148	210	4	700	2,800	14KG
TT152216-8P	152	216	4	680	2,720	14KG
TT216152-8P	216	152	4	1,000	4,000	21KG



SUPPLYLINE & ARMOR Coding / Printing Foils

www.barodelabelsolutions.co.uk

ABOUT ARMOR Industrial Coding and Printing (ICP), a shared identity!

ARMOR is a French group with sites throughout the world, whose ICP division designs and manufactures inked films used in Thermal Transfer technology. This technology is for marking bar codes, logos, use-by dates or other

batch information on labels or flexible packaging.

Since its founding in 1922 in Nantes, ARMOR has been a pioneer in its principle area of business: printing inks. ARMOR was one of the first companies to manufacture carbon film, then to launch ribbon cassettes for typewriters and subsequently printers, and finally

to introduce Thermal Transfer technology into Europe in the early 1980s.

ARMOR ICP is:

- 110 million Euros turnover in 2009,
- Over 650 employees worldwide,
- 5 production sites globally,
- 50% market share in Europe,
- 110,000 Thermal Transfer film rolls slit daily.

ARMOR COLOURPACK RANGE

AWR WAX	COLOUR	PANTONE No.	DESCRIPTION
	LIGHT RED	185 C	AWR 458R
	GOLD	874 C	AWR 502GD
	LIGHT GREEN	GREEN C	AWR 459G
	DARK BLUE	286 C	AWR 460B

APR WAX/RESIN	COLOUR	PANTONE No.	DESCRIPTION
	LIGHT RED	1788 C	APR 558R
	DARK RED	485 C	APR558R
	BROWN	463 C	APR530BN
	LIGHT GREEN	GREEN C	APR 559G
	DARK GREEN	554 C	APR 5G
	DARK BLUE	286 C	APR 5B
	LIGHT BLUE	REFLEX BLUE C	APR 560B
	GREY	5425 C	APR 531GY
	WHITE		APR 5W

AXR FULL-RESIN	COLOUR	PANTONE No.	DESCRIPTION
	WHITE		AXR 600W
	DARK RED	192 C	AXR 600B
	LIGHT GREEN	GREEN C	AXR 600G
	DARK BLUE	286 C	AXR 600R

AXR® 7+ FULL-REIN RIBBON

This is dedicated to applications requiring a perfect printing quality and excellent mechanical resistances. The ink provides excellent printing quality of all types of barcodes, very small text, large characters and logos, at a blackness up to 1.7 (ODR).

The ribbon structure allows printing on many kinds of synthetics (PVC, PET, PE, PP), on various matt and high gloss coated papers and even on some uncoated papers.

The printed image offers an excellent smudge and scratch resistance and good heat resistance, up to 180°C.

Those characteristics remain at speeds up to 250 mm/s (10 ips) and with 200, 300 and 600 DPI printheads, making this ribbon perfectly suited to the labelling market, and allowing its use in the flexible packaging printing market.

APR® 600 WAX/RESIN RIBBON NEAR-EDGE

This combines a multi receptor compatibility with good level of performance.

This high versatility allows it to fulfil the requirements of many applications.

The ink provides excellent printing quality of all types of barcodes, very small text, large characters, and logos, at a blackness up to 2.2 (ODR).

The ribbon structure allows printing on various kinds of receptors, such as uncoated and coated papers, and synthetics. The printed image offers a good level of smudge resistance and heat resistance up to 100°C.

Those characteristics remain at speeds up to 600 mm/s (24 ips) and with 200, 300 and 600 DPI printheads, making this ribbon perfectly adapted either to the labelling market or the flexible packaging printing market.



AWR® 470 WAX RIBBON

This is a general purpose ribbon particularly adapted to standard label printing.

The ink provides excellent printing quality of standard barcodes, very small text, large characters and logos, at a blackness up to 2.1 (ODR).

The ribbon structure allows printing on all kinds of papers and uncoated papers in particular. This feature makes the ribbon highly recommended to the standard labelling market. Printing is also possible onto various synthetics.

The printed image offers heat resistance up to 60°C.

Those characteristics remain at speeds up to 300 mm/s (12 ips) and with 200, 300 and 600 DPI printheads.



AWX® FH ENHANCED WAX RIBBON

This is ARMOR's new generation resin enhanced wax ribbon, particularly adapted to standard label printing where good mechanical resistance is required.

The ink provides excellent print quality of standard and ladder barcodes, very small text, large characters, and logos, at a blackness up to 2.0 (ODR).

The ribbon structure allows printing on various receptors, such as coated and uncoated papers and some synthetics.

The printed image offers improved smudge resistance compared to standard wax and heat resistance up to 100°C (212°F).

These characteristics remain at speeds up to 300 mm/s (12 ips) and with 200, 300 and 600 DPI printheads.

APR® 6 WAX/RESIN RIBBON

This is a highly sensitive premium wax/resin ribbon designed to give excellent printing performance at low energy. It can be printed on a wide range of substrates with the same level of performance.

The ink provides excellent printing quality for all types of barcodes, very small text, large characters and logos, at a blackness up to 2.1 (ODR).

The ribbon structure allows printing on a wide range of receptors, such as uncoated and coated papers and synthetics.

The printed image offers a good level of smudge resistance combined with heat resistance up to 100°C.

Those characteristics remain at speeds up to 300 mm/s (12 ips), and with 200, 300 and 600 DPI printheads, making this ribbon perfectly adapted to the labelling market.



TIME FOR CHANGE !

The only ribbon in the world, 100% produced without using solvents, even for the backcoating layer !



SOLFREEN RIBBONS

ARMOR is introducing SolFree®, a unique Solvent Free Process that will revolutionise the Thermal Transfer ribbon market and technology.

This process is patented and illustrates the innovation capability of ARMOR, as well as its willingness to invest in long term strategy. SolFree® also demonstrates the will and capability to offer unique solutions to the market, in anticipation of today's and tomorrow's environmental requirements.

A commitment to both environmental preservation and people safety was recognized in 2006 by ISO 14001 and OHSAS 18001 certifications. SolFree® is a tangible result of these commitments.



FOR EACH ROLL OF AWR®470 **SOLFREEN®**
AT LEAST **365 GRAMS OF CO₂ SAVED**
compared to other rolls produced with a traditional process





SUPPLYLINE & ITW a great partnership

www.barodelabelsolutions.co.uk

ITW manufactures, converts, and distributes PrintheadSaver® thermal transfer ribbons (TTR) for bar coding and labeling applications to customers around the world.

PrintheadSaver® thermal transfer ribbons for flat head technology printers are available in our standard resin enhanced wax grade, PrintheadSaver® Extreme Series Midrange™ (ESM™) wax/resin and Extreme Series Resin™ (ESR™) formulations for applications requiring

a higher level of performance and versatility.

For near edge or corner edge technology printers, our PrintheadSaver® Techno-Edge™ wax/resin and resin ribbons are designed to get the maximum efficiency out of near edge printheads, while providing you with the superior performance characteristics you need for abrasion and environmental resistance.



ITW B220 Enhanced WAX

Resin enhanced wax ribbons are the most common general purpose bar code ribbon. Wax ribbons work well on coated and uncoated paper stocks, and print at higher speeds and lower temperatures than wax/resin or resin ribbons.

PrintheadSaver® B220 resin enhanced wax ribbon is a multipurpose bar code ribbon that yields excellent results on a broad range of media. An economical solution for most general use applications, B220 utilizes our proprietary anti-static coating and high sensitivity inks, operates at low print energy, prolonging printhead life, and produces high quality, sharp, crisp bar codes and variable images. In addition, B220's ink coating is solvent-free, making it an eco-friendly bar code ribbon solution.

ITW B121 WAX/RESIN

Flexible ESM™ - High label flexibility and low print energy, this wax/resin is ideal for general applications that require medium scratch and abrasion resistance. This would be considered a value product, where performance may be a secondary concern.

B121 Flexible ESM™ is designed to give outstanding print density on the widest range of label materials at high speed while using minimal printhead energy. Designed for flathead thermal transfer printers, B121 is an excellent all round flexible wax/resin ribbon that produces dark, crisp bar codes and images and offers durability and scratch/abrasion resistance above a wax ribbon making it ideal for a wide assortment of applications.

ITW B324 FULL-RESIN

B324 Durable ESR™ is a UL® recognized multi-purpose thermal transfer resin ribbon designed to work with most flat head technology printers in industrial conditions. Featuring excellent physical properties and the resilience to withstand harsh work environments, B324 produces exceptional print density for high resolution images and sharp/clean barcodes on a wide variety of both paper and film media. Formulated with our proprietary anti-static coating and high sensitivity inks that enable you to maintain and sustain the life of your printheads, B324 is a perfect choice for demanding applications in a wide range of high end market sectors.

PRINTER
RIBBONS &
CODING FOILS



ITW THERMAL FILMS
EXTREME
SOLUTIONS



SUPPLYLINE & ITW a great partnership



ITW THERMAL FILMS
EXTREME™
SOLUTIONS

ITW B112 NEAR-EDGE WAX/RESIN

Flexible Techno-Edge™ - Specifically designed to run on thermal transfer printers with near edge printheads, these wax/resin ribbons provide consistent print quality, and clean dot edges for bar codes that are dark, dense and readable on a wide range of media at high print speeds. Techno-Edge™ wax/resin ribbons offer outstanding performance and superior durability, especially in high speed applications like flexible film and print and apply applications.

B112 Flexible Techno-Edge™ wax/resin ribbon is specifically designed to work with near edge technology printers in high volume labeling applications. B112 can be used on a wide range of paper and film media, and offers superb scratch resistance, is UV resistant and produces sharp, clean print density and edge definition while using low print energy.

ITW P110 HIGH SPEED NEAR-EDGE WAX/RESIN

P110 High Speed Techno-Edge™ wax/resin is a thermal transfer ribbon that is designed especially for the flexible packaging printing market where optimum printing performance at high speeds is required. Developed for near edge technology printers, P110 produces excellent print density and definition on a wide range of substrates, producing high resolution bar codes, texts and graphics. P110 prints at 20-31 inches/second (500-800mm/second), and has a high resistance to scratching, smearing, abrasion and heat for superior scan rates in high volume applications. P110 high speed wax/resin is also available in white providing a quick visual recognition of price codes, date codes, lot codes and other variable imagery that is printed on flexible packaging, and other labeling applications that require a colour differentiator.



PRINTER
RIBBONS &
CODING FOLDS





datamax·oneil

ValuedPartner



datamax·oneil
CERTIFIED SUPPLIES

IQWax Ribbon WAX

IQWax is a premium general purpose resin-enhanced wax printer ribbon, offering broad performance characteristics and delivering a high-quality crisp image with applications that require high-speed barcode printing and enhanced printhead protection.

IQMid Ribbon WAX/RESIN

IQMid is a premium wax-resin ribbon offering broad performance characteristics and smudge resistance. These ribbons produce a high-quality image on the broadest range of materials.

IQRes Ribbon FULL-RESIN

IQRes is a superior resin ribbon offering broad performance characteristics and smudge resistance. These ribbons produce a high-quality image on the broadest range of materials in extreme application environments. IQRes series ribbons print on both paper and film materials.



ThermaMAX TMX1000 WAX RIBBON

Good quality, general use, economical.

ThermaMAX TMX2000 WAX/RESIN RIBBON

High image quality and increased abrasion and smear resistance.

ThermaMAX TMX3000 FULL-RESIN RIBBON

Extremely durable. Printed images endure 3+ years exposure to UV, snow and rain.



AW3 WAX RIBBON

Wax ribbon for flat-head printers. Suitable for most paper and synthetic materials. General purpose. Available in colours. Excellent multi-receptor compatibility. Improved blackness, sharper printed images. Good sensitivity.

AG2 WAX/RESIN RIBBON

Smearless. Available for both near edge and flat head printers. General purpose. Available in colours. Excellent material compatibility. Clear sharpness of 90° barcodes. Excellent for high speed printing. Excellent Smudge resistance and blackness.

AS1 FULL-RESIN RIBBON

Pure resin ribbon for near edge printers. Suited to most synthetic label materials. Good mechanical resistance. Available in colours. Excellent print quality. Good resistance to high temperatures. Outstanding scratch and solvent resistance.





Genuine Zebra™ supplies



The natural choice for your Zebra® printer

Get the best performance from your Zebra printer by using genuine Zebra supplies

Quality

Zebra supplies are made by Zebra, for Zebra printers, to the highest standards. They are all extensively tested to ensure best print quality and performance before they are branded and introduced into the range. Tested on the printers they will be used on, in the combinations they will be used in, they are developed specifically for our users' requirements.

Performance and reliability

Using genuine Zebra supplies will give optimum printer performance and minimise printhead wear and tear. By using Zebra supplies, you can be sure of consistent performance and can eliminate scanning and printing issues that you may experience with other manufacturers' labels, receipts and tags.

Wide product range

Zebra has a wide range of over 75 label, tag and receipt materials as well as specialist products such as wristbands. Paper and synthetic, direct-thermal and thermal-transfer, self-adhesive and tags: we've got it covered. Zebra can also deliver expert solutions, such as tamper-evident labels, high-temperature labels and special adhesives.

Convenience

Zebra can respond to all your labelling needs and reduce the need to source from different suppliers. Zebra has a full range of over 400 branded (ZipShipSM) supplies solutions in stock, as well as made-to-order (custom) supplies. Zebra Technologies holds ribbons in stock at a variety of widths for all printers from narrow desktop wax ribbons to wide resin ribbons.



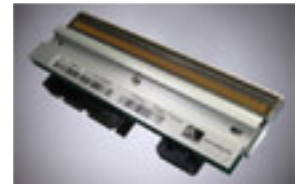
Why genuine Zebra supplies?

- Quality
- Performance and reliability
- Wide product range
- Convenience

Zebra develops supplies specifically for its printer range and the markets served by its printers.

- Logistics
- Manufacturing
- Post and parcel
- Parking
- Public transport
- Retail
- Hospitality, service and leisure
- Healthcare
- Government
- Utilities
- Mobile workforce





SUPPLYLINE No.1 For GENUINE Heads

www.supplylineid.com

Supplyline offers one of the widest range of thermal print-heads on the market for Genuine OEM Heads, listed here are our most popular brands and heads but we also supply GENUINE HEADS FOR: CITIZEN / SATO / PRINTRONIX / NOVEXX / CAB and AVERY-PAXAR.

CALL OUR SALES LINE FOR LATEST PRICES **TEL: 01403 865 111.**



BRAND	MODEL	RESOLUTION	PART No.
DATAMAX	I4208 / I4212	200DPI	20-2181-01
DATAMAX	I4308	300DPI	20-2182-01
DATAMAX	M4206	200DPI	20-2220-01
DATAMAX	W6208	200DPI	20-2164-01
DATAMAX	W6308	300DPI	20-2195-01
DATAMAX	ALLEGRO II	200DPI	220039
DATAMAX	PRODIGY	203DPI	220039
DATAMAX	PRODIGY MAX	200DPI	220039



BRAND	MODEL	RESOLUTION	PART No.
ZEBRA	110XI SERIES	203DPI	G41000-1M
ZEBRA	110XI SERIES	300DPI	G41001M
ZEBRA	110XI SERIES	600DPI	G47500M
ZEBRA	140XI SERIES	203DPI	G48000M
ZEBRA	170XI SERIES	203DPI	G38000M
ZEBRA	170XI SERIES	300DPI	G46500M
ZEBRA	220XI SERIES	203DPI	G22000M
ZEBRA	220XI SERIES	300DPI	G47426M
ZEBRA	105SL	203DPI	G32432-1M
ZEBRA	105SL	300DPI	G32433M
ZEBRA	105SE	200DPI	44000M
ZEBRA	105SE	300DPI	44800M
ZEBRA	S4M	200DPI	G41400M
ZEBRA	S400	200DPI	44999M
ZEBRA	S600	200DPI	G44998-1M
ZEBRA	Z4M	200DPI	G79056-1M
ZEBRA	Z4M	300DPI	G79057M
ZEBRA	ZM400	200DPI	79800M
ZEBRA	ZM400	300DPI	79801M
ZEBRA	Z6M	200DPI	G79058M
ZEBRA	Z6M	300DPI	G790589
ZEBRA	ZM600	200DPI	79803M
ZEBRA	ZM600	300DPI	798904M



BRAND	MODEL	RESOLUTION	PART No.
INTERMEC	3400 A/B/C	200DPI	0694485-002
INTERMEC	EC501	200DPI	1-010010-93
INTERMEC	EC501XP	300DPI	1-010020-90
INTERMEC	F2	200DPI	1-010102-90
INTERMEC	F4	200DPI	1-010103-90
INTERMEC	PF2I	200DPI	1-010030-900
INTERMEC	PF4I	200DPI	1-010043-90
INTERMEC	PM4I	200DPI	1-010043-90
INTERMEC	PX4I	200DPI	1-040082-900

TOSHIBA

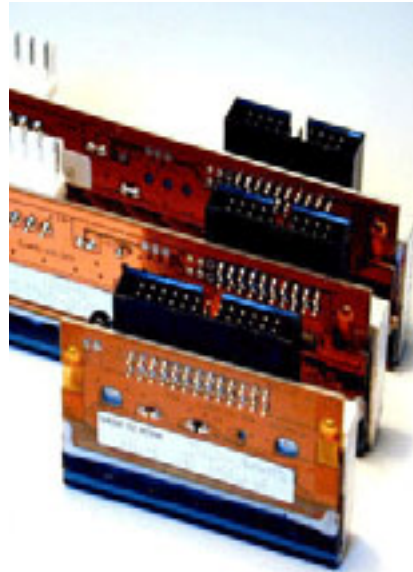
BRAND	MODEL	RESOLUTION	PART No.
TOSHIBA	TEC B452	300DPI	FMBC0073203
TOSHIBA	TEC B472	200DPI	FMBB0050105
TOSHIBA	TEC B572	300DPI	FMBB0050103
TOSHIBA	TEC B672 / 682	300DPI	FMBC004307
TOSHIBA	TEC B872 / 882	300DPI	FMBC0044306
TOSHIBA	TEC B372	300DPI	FMBB0036203
TOSHIBA	BSA4TP / TM	203DPI	7FM00973000
TOSHIBA	BSA4TP / TM	300DPI	7FM00973100
TOSHIBA	TEC BEX4	203DPI	
TOSHIBA	TEC BEX4	300DPI	B-EX704-TPHE3-QMR



SUPPLYLINE COMPATIBLE Heads

www.supplylineid.com

Supplyline offer one of the widest range of print-heads on the market from Genuine OEM Heads, to superb quality alternative or compatible print-heads from leading manufacturers that include KYOCERA and RHOM. These heads are made with the same warranty as the Genuine products, and are manufactured in the highest quality state of the art manufacturing plants.



SAVE MONEY AND BUY COMPATIBLE PRINT-HEADS FOR:

- AVERY
- CAB
- CITIZEN
- DATAMAX
- INTERMEC
- ICE (MARKEM)
- JAGUAR
- NOVEXX
- SATO
- SMART-DATE (MARKEM)
- TOSHIBA-TEC
- ZEBRA



SPARE PARTS & ACCESSORIES

SUPPLYLINE FOR ALL YOUR PRINTER SPARE PARTS

- BATTERY SPARES & CHARGERS
- CABLES
- LAN 10/100 ETHERNET
- PLATEN ROLLERS
- PRINTHEADS
- PSU
- PCB MAIN BOARDS
- SENSORS
- WIFI



MOST MAJOR BRAND PARTS IN STOCK

Telephone: 01403 865 111



SUPPLYLINE ON-SITE SERVICE & MAINTENANCE OPTIONS:

Printer Service Levels

Level 1 = 12 month contract with 8 hour response.

On site service support provided within 8 hours of a phone call. All repairs and replacement parts included in price.

Exclusions:

Print-heads, user damaged parts and missing parts.

Response:

Service response based on calls received between 0900 and 1700 on working days excluding Bank Holidays.

8 hour response is based on the time of day the call is received so some service visits will fall into the next working day.



Level 2 = Ad Hoc call out

On site service support provided within 16 hours of a phone call.

Service provided against an initial call out fee which includes the first 30 minutes of service time.

Additional service time charged at an hourly rate.

All repairs and replacement parts are additional.

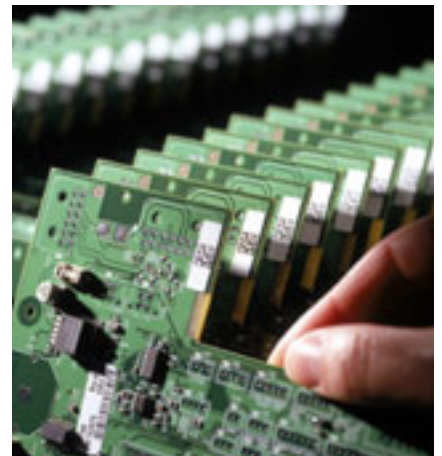
Exclusions:

All Parts are chargeable.

Response:

Service response based on calls received between 0900 and 1700 on working days excluding Bank Holidays.

16 hour response is based on the time of day the call is received so some service visits will fall into the next working day.



Level 3 = Return to base repair

Based on Customer shipping printer to our location by insured courier service.

Initial free inspection provided to determine repair requirements and costs.

Quotation provided within 48 hours of receipt which will include parts, labour, estimated timescale and return delivery by courier.

In the event of a repair quotation being declined and a request to return the printer with no repair, a minimum charge of £ 20.00 will be made to cover return delivery.



SUPPLYLINE No.1 For Service

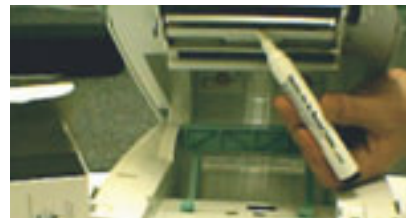


THERMAL CLEANING SOLUTIONS

www.supplylineid.com

THERMAL PRINTER CLEANING PENS:

These specially designed pre-saturated cleaning pens are for all makes and models of thermal printers (inc PVC card printers) and clean thermal print-heads that are easily accessible. The Pen features an exclusive durable cleaning tip that no other pen can match. Users simply run the pen over the print-head until it is clean.



THERMAL PRINTER CLEANING CARDS:

These specially designed cleaning cards clean thermal print-heads that are not easily accessible. The "patented" card is saturated with 99.9% isopropyl alcohol. Simply feed the card through your printer as you would any label or tag stock, and it will remove contaminants from the print-head, guide paths and rollers allowing for easy and safe maintenance of your machine. Individually foil wrapped for continued freshness.



ITW "PRINT-HEAD SAVER" THERMAL PRINTER CLEANING WIPES + CLOTHS:

These specially designed cleaning cloths clean thermal print-heads that are not easily accessible and platen rollers also doubling up as an all-round cleaning cloth for sensors and guide path. The "ITW Print-Head Saver" cloth is saturated with 99.9% isopropyl alcohol. Simply feed the cloth through your printer as you would any label or tag stock, and it will remove contaminants from the print-head, guide paths and rollers allowing for easy and safe maintenance of your machine.

Individually foiled wrapped for continued freshness.



"THE ULTIMATE" THERMAL CLEANING KIT:

This specially designed cleaning kit contains everything you would need to keep your printers clean and maintained. The kit includes IPA (for thermal print-head cleaning) LABEL OFF (for easy removal of adhesive & gunk) SCREEN (cleaning exterior printers, screens, panels etc.) DUST OFF (dry and oil-free high pressure gas to remove dust and reach inaccessible areas) Also all sold separately in packs of 6.



PRINT-HEADS
/SPARES/
SERVICING

IMPROVE PRINT-HEAD LIFE BY OVER 100%



Telephone: 01403 865 111



BarTender® Lets You Juggle Printers with Confidence

High volume labeling in today's enterprise environments rarely depends on just one or two printer models. Shipping, receiving, manufacturing and inventory operations can be thousands of miles apart and use a variety of current and legacy printers. Fortunately, BarTender label software helps keep your clients' supply chain flowing. Whether they have multiple copies running in numerous network locations, or a single copy networked to multiple printers, BarTender provides quick, easy selection of just about any printer.

BarTender comes with our high quality drivers for over 2,200 industrial label printers from 70+ manufacturers, including numerous RFID-capable models. Just like the laser and inkjet printer drivers that come with Windows, our drivers are installed and networked using familiar procedures and can even be used with other software. That's why many of the world's largest label printer manufacturers include Drivers by Seagull™



Download a full-working Trial Edition of BarTender for free today!



SAP® Certified
Integration with SAP Applications



BarTender and Drivers by Seagull are trademarks of Seagull Scientific, Inc. Windows and the Windows logo are trademarks of the Microsoft group of companies. Oracle and Java are registered trademarks of Oracle and/or its affiliates. The SAP Certification Logo is the registered trademark of SAP AG in Germany and in several other countries. All other trademarks are the property of their respective companies.





The World's Leading Label & RFID Software

www.supplylineid.com



ENTERPRISE AUTOMATION:

EA

BarTender's most powerful edition, with advanced server functions for centralized printing and administration. Provides the most integration features. Includes all 8 companion applications, including the Librarian document management system and our most advanced version of Security Centre. Printer maestro includes support for tracking printer parts inventory and in-printer media usage. Includes RFID support. (This edition was previously named "Enterprise Print Server")

AUTOMATION:

A

BarTender's most powerful label design features, plus our standard integration features for automated control by other software. No enhanced server functions. Supports RFID. All card printing functions, but only encodes magnetic stripes. Does not include Librarian or our most advanced Security Centre features. Printer Maestro manages network printers visible to the local PC only and does not track printer supplies. Job logging, History Explorer, and Reprint support local database only.

PROFESSIONAL:

P

All the design features of Automation and most of the data access, but no automation from other software. Includes the Print Station and Batch Maker companion applications.

BASIC:

B

BarTender's most important design features, but no database access and no automation. Print station is the only included companion application.

What's New in Bar-Tender Version 10.0

Coming 25 years after the very first version of BarTender, version 10 is the biggest and most exciting software release in our history.

Introducing card printing, truly professional drawing functions and major user-interface improvements, BarTender now expands its industry leadership way beyond just label design and printing.

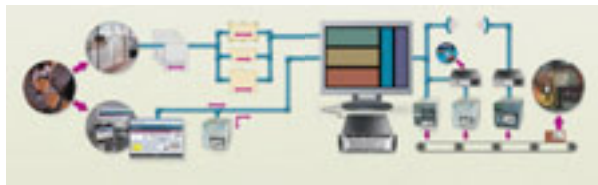
Card Printing and Encoding! BarTender version 10 adds powerful features dedicated to the design, printing, and encoding of ID cards, employee security badges, membership cards and just about any other plastic card you can imagine.

Now it's easier than ever to select exactly the barcode you need. Quickly preview more than 400 preformatted, ready-to use barcode components. Choose from numerous "Common Barcodes" or drill down into folders of different application-specific barcodes.



Additional New Features:

- **BarTender version 10.0 also introduces:**
- **New simplified Installer**
- **Expanded Librarian integration**
- **New print-time "Search and Replace" functions**
- **Available automatic borders for barcodes, text and graphics**
- **Export and print logs from History Explorer**
- **Improved weighing scale options**
- **Expanded printer function in the Print SDK**
- **Shell Extension now supports x64**
- **Support for Print Quantity commands beyond four billion**



World-famous Printer Driver from Seagull.

www.seagullscientific.com / www.supplylineid.com

BarTender supports any printer with a Windows driver, including most laser, ink-jet and dot-matrix printers. Seagull has also developed its own enhanced Windows drivers for:

3M / Accumax / Argox / APS / Autonics / Avery Dennison / Birch / Bixolon / Brady / C.Itoh / cab / Century Systems / Citizen / CognitiveTPG / Comtec / Datamax-O'Neil / Datasouth / Dedruma / Domino / Eltron / ETISYS / Evolis / General Code / Godex / Graphic Products / GSK / IBM / Imaje / Intermec / KROY / Markpoint / Mectec / Meto / Monarch Novexx / Okabe / OPAL / Pitney Bowes / Postek / Pressiza / Printronix / Quick Label Ring / Samsung / SATO / SII / Sumitomo / System Wave / Tally-Genicom / Tharo / Thermopatch / ThermoTex / Toshiba TEC / TSC / Tyco / Unimark / Valentin / Videojet / VIPColor / Wasp / Wedderburn / Zebra.



BARCODE
& LABEL
SOFTWARE

LABEL REWIND UNITS

Label Mate MC11



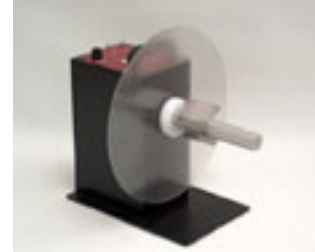
WIDTH	Up to 115mm label
FEATURES	Constant Adjust Torque
CORE TYPE	Adjustable 25 to 100mm
ROLL DIAM	Label Roll Diam of 220mm
WARRANTY	5 Year Return to base

The Labelmate MC11 is universal with nearly all types of label printers.

An Adjustable core allows rewinding onto any core size between 25mm and 100mm in diameter.

**Industry Leading 5 Year
Manufacturers warranty**

Label Mate CAT 2



WIDTH	Up to 155mm label
FEATURES	Constant Adjust Torque
CORE TYPE	Fixed Core 76mm Standard
ROLL DIAM	Label Roll Diam of 300mm
WARRANTY	5 Year Return to base

The Labelmate CAT2 is universal with nearly all types of label printers.

An Adjustable speed regulator allows you to control the speed and direction you want to wind at.

Options include: Adjustable Paper Guide, Foot Switch to start and stop, Set of Vanes to allow different core diameters.

**Industry Leading 5 Year
Manufacturers warranty**

AD11211-SO RWR



WIDTH	Up to 160mm label
FEATURES	Dancing Arm Self-tension
CORE TYPE	Adjustable 30 to 100mm
ROLL DIAM	Label Roll Diam of 220mm
WARRANTY	1 Year Return to base

The RWR Series is our best selling industrial Rewind unit.

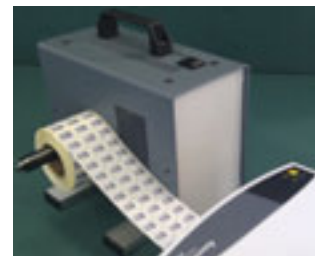
An Adjustable core allows rewinding onto any core size between 30mm and 100mm in diameter.

Dancing arm helps with roll winding allowing for controlled and smooth label feed.

BEST SELLER

1 Year Manufacturers warranty

3D2900 Mini Rewinder



WIDTH	Up to 110mm label
FEATURES	Slip Clutch
CORE TYPE	Fixed Core 25mm Standard
ROLL DIAM	Label Roll Diam of 150mm
WARRANTY	1 Year Return to base

The 3D2900 is universal with nearly all types of Desktop label printers.

Lower cost option when compared to the industrial models.

Small size allows the product to be used on a desk.

BEST SELLER

1 Year Manufacturers warranty

GLR-50



WIDTH	Up to 114mm label
FEATURES	Dancing Arm Self-tension
CORE TYPE	Fixed Core 76mm Standard
ROLL DIAM	Label Roll Diam of 200mm
WARRANTY	1 Year Return to base

The GLR-50 winds onto a 76mm Core (adaptor kits for other sizes available).

Dancing arm helps with roll winding allowing for controlled and smooth label feed.

1 Year Manufacturers warranty

UR-100



WIDTH	Up to 200mm label
FEATURES	Dancing Arm Self-tension
CORE TYPE	Fixed Core 76mm Standard
ROLL DIAM	Label Roll Diam of 200mm
WARRANTY	1 Year Return to base

The UR-100 winds onto a 76mm Core as standard with optional 38mm and 44mm spindles.

Dancing arm helps with roll winding allowing for controlled and smooth label feed.

1 year manufacturers warranty

Label Counter RRC330



WIDTH	Up to 152mm label
FEATURES	Constant Adjust Torque
CORE TYPE	Fixed Core 76mm Standard
ROLL DIAM	Label Roll Diam of 330mm
WARRANTY	3 Year Return to base

The Labelmate RRC330 brings you new convenience in self-contained table-top Label Counting Systems.

A state of the art fork detector allows you to count almost any type of label, including transparent and black labels.

A choice of fixed cores are on offer which include 38, 44 and 76mm cores.

Industry Leading 3 Year Manufacturers warranty

Label Counter RRC330-ACH



WIDTH	Up to 152mm label
FEATURES	Constant Adjust Torque
CORE TYPE	Adjustable 25mm to 100mm
ROLL DIAM	Label Roll Diam of 330mm
WARRANTY	3 Year Return to base

The Labelmate RRC330-ACH brings you new convenience in self-contained table-top Label Counting Systems.

A state of the art fork detector allows you to count almost any type of label, including transparent and black labels.

An Adjustable core allows rewinding onto any core size between 25mm and 100mm in diameter.

Industry Leading 3 Year Manufacturers warranty

LABELMATE S100 & S200



WIDTH	170 and 255mm Wide
FEATURES	2 Precision high speed blade
CORE TYPE	25mm -76mm
ROLL DIAM	Label Roll Diam of 225mm
WARRANTY	3 Year Return to base

Allows fast even and tidy reel to reel slitting of multiple labels.

Easy to load, easy to use.

Optional PCI counter for high speed counting.

Industry leading
3 Year Manufacturers warranty

DISPENSA-MATIC U45



WIDTH	Up to 114mm wide
FEATURES	Roll Fed or Fan-Fold Labels
CORE TYPE	76mm
ROLL DIAM	Label Roll Diam of 225mm
WARRANTY	1 Year Return to base

Roll fed or Fan-folded labels can be automatically dispensed.

Easy to load, easy to use.

Free standing, rigid metal construction.

1 Year Manufacturers warranty

DISPENSA-MATIC 10-II



WIDTH	225mm Labels
FEATURES	Single Stroke Trigger
CORE TYPE	25mm Core
ROLL DIAM	Label Roll Diam of 229mm
WARRANTY	1 Year Return to base

Roll fed or Fan-folded labels can be automatically dispensed.

Large labels up to 225mm wide, can be easily changed from roll fed labels to fan-fold labels without the need for tools.

Free standing, rigid metal construction.

1 Year Manufacturers warranty

BOTTLE-MATIC I & II



WIDTH	Up to 380mm label
FEATURES	Can apply two labels
SPEED	Over 1000 per hour
ROLL DIAM	Label Roll Diam of 150mm
WARRANTY	1 Year Return to base

The Bottle-Matic will apply labels up to 380mm wide onto cylindrical containers and bottles, from 12mm to 250mm diam at a speed of up to 1200 pieces per hour.

The Bottle-Matic II can apply one or two labels (Back & Front) to a container with adjustable increments of 0.25mm.

1 Year Manufacturers warranty

MANUAL-ROLL DISP MB



WIDTH	50, 80, 150 and 250mm
FEATURES	Easy to Load
CORE TYPE	25mm -76mm
ROLL DIAM	Label Roll Diam of 175mm
WARRANTY	1 Year Return to base

A complete range of manual label dispensers at your fingertips.

Easy to load, easy to use.

Free standing or wall mounted, rigid metal construction.

1 Year Manufacturers warranty

MULTI-ROLL DISPENSER



WIDTH	Up to 280mm wide
FEATURES	Dispenses 4 Rolls at once
CORE TYPE	25mm -76mm
ROLL DIAM	Label Roll Diam of 175mm
WARRANTY	1 Year Return to base

The essential dispenser for a multitude of different sized rolls of labels.

Easy to load, easy to use. Fitted with 4 roll dividers.

Free standing or wall mounted, rigid metal construction.

1 Year warranty

FIXA AP65 SERIES LABEL GUN



WIDTH	30, 60 and 100mm Labels
FEATURES	Single Stroke Trigger
CORE TYPE	25mm Core
ROLL DIAM	Label Roll Diam of 100mm
WARRANTY	1 Year Return to base

The AP65 label gun series have a patented design for excellent label application for most shapes of labels. One simple click on the trigger allows easy application of the label. A choice of three model types.

Unique edge-sensor adjusts label strokes automatically.

BEST SELLER

1 year manufacturers warranty

SCOOTER LABEL GUN



WIDTH	35mm and 60mm models
FEATURES	Low Cost
CORE TYPE	Fixed Core 25mm Standard
ROLL DIAM	Label Roll Diam of 100mm
WARRANTY	1 Year Return to base

A choice of two models, 35mm wide and 60mm wide.

Low cost, with simple pull action for dispensing labels.

All plastic construction.

1 Year Manufacturers warranty



BOTTLE LABEL APPLICATORS

BOTTLE-MATIC II



WIDTH	Up to 380mm label
FEATURES	Can apply two labels
SPEED	Over 1000 per hour
ROLL DIAM	Label Roll Diam of 150mm
WARRANTY	1 Year Return to base

The Bottle-Matic will apply labels up to 380mm wide onto cylindrical containers and bottles, from 12mm to 250mm diam at a speed of up to 1200 pieces per hour.

The Bottle-Matic II can apply one or two labels (Back & Front) to a container with adjustable increments of 0.25mm.

1 Year Manufacturers warranty

MBA01



WIDTH	Up to 380mm label
FEATURES	13mm to 165mm Diam Cylinders
SPEED	Over 500 per hour
ROLL DIAM	Label Roll Diam of 200mm
WARRANTY	1 Year Return to base

Quickly applies labels to bottles, cans, jars and other cylindrical products and is ideal for short runs.

Accurately places labels in the same location for consistent look.

Easily adjustable for different sized cylindrical containers without the need for tools from 13mm to 165mm diameter.

Heavy duty metal construction.

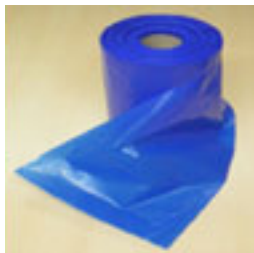
1 Year Manufacturers warranty

FOOD GRADE BAGS

BLENDED POLY Bags



BLUE VEG Bags



GRIP-SEAL Bags



EXCEL Bags In Dispensers



Assorted Food Bags





JUICE / MILK BOTTLES & LIDS



250ml / 500ml / 1 litre / 2 litre Round Natural Juice Bottles



1 Litre Juice bottle



2 Litre Juice bottle



3 Litre Juice bottle



4 Litre Juice bottle

CAPS available in orange/green/blue/yellow/gold/red/black

P.E.T Round Juice Bottles



250ml / 500ml / 1 litre
Round PET juice bottles





ADHESIVE TAPE ON A ROLL

PRICING GUNS AND LABELS

Adhesive Tape has taken on a new roll and dimension at supplyline using new longer rolls mean:

- Better transport efficiency
- Less changeover time
- Better user efficiency
- Time and money savings!

Size 48mm X 150M.

Bespoke printing available.



PRICING GUNS & LABELS



- UK market leading brand
- Extremely robust
- Ideal for heavy use
- Date facility
- 2 - Year warranty
- Lynx C Ink Roller





SHRINK WRAP AND PALLET WRAP

HAND AND MACHINE APPLIED



High performance Blown pallet wrap that doesn't let you down!

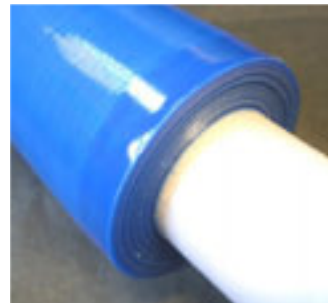
SUPPLYLINE offers pallet wrap:

- Consistent quality
- High strength blended product
- Available in clear or blue tint
- Extended or standard cores
- Recyclable product
- Securely packaged

6 rolls per box, 40 boxes per pallet



PALLET COVERS





HAND STRAPPING EQUIPMENT & SUPPLIES

MACHINE STRAPPING

Hand Strapping Trolleys



Semi-automatic Strapping machine



Strapping - Also Available in black or white

Combitool



Crimping tool



Strapping Seal



Strapping Tensioner



Strapping Buckle





SCAN ME NOW
www.emea.zebra.com/zt200



THE ZT200™ SERIES FROM ZEBRA

DESIGNED WITH YOU IN MIND

When you need a feature-rich printer, but want it to be compact, affordable and easy to use, the ZT200 series is the ideal choice.

Replacing the S4M™ series, the ZT220™ and ZT230™ printers are so straightforward, you'll get great results with no fuss.

The intuitive user interface means little or no training is needed, and media changes are quick and easy thanks to a side-loading design and colour-coded media path.

So whatever barcode labels you're printing, and whoever's printing them, the versatile and reliable ZT200 series printers are a compelling choice.



ZEBRA® ZT200 SERIES PRINTERS

Find out more, or see the range at

SUPPLYLINE ID LTD

Oakdene Ind Estate / Cowfold / RH13 8AZ
01403 865 111
info@supplylineid.com



SEE MORE. DO MORE.

©2012 ZIH Corp. All product names and numbers are Zebra trademarks, and Zebra and representation of Zebra Head are registered trademarks of ZIH Corp. All rights reserved. All other trademarks are the property of their respective owners.



PHARMACEUTICAL



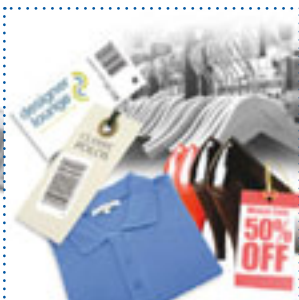
WAREHOUSING



HEALTHCARE



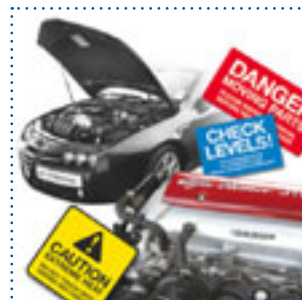
GARDEN CENTRES



RETAIL



PACKAGING



AUTOMOTIVE



PRODUCE



CHEMICAL



ELECTRONICS



MANUFACTURING



HORTICULTURE



SUPPLYLINE AUTO ID LTD

Supplyline House,
Oakendene Industrial Estate,
Cowfold,
West Sussex,
RH13 8AZ

Tel: 01403 865 111

Fax: 01403 865 222

Email: info@supplylineid.com

Website: www.supplylineid.com